

BUTLER

Design by Kris Van Puyvelde



BUTLER SPECIFICATIONS

STANDARD / ON REQUEST

SIDE TABLE	
REF:	BTL 40TL...
WEIGHT:	C: 8,1 kg / 17,8 Lbs W: 5,4 kg / 11,9 Lbs V: 8 kg / 17,6 Lbs
INFO:	ASSEMBLING NEEDED



		COATED STAINLESS STEEL					
		WR	PB	S	BR	A	
CERAMIC	WUM	BTL 40TL CWRWUM	BTL 40TL CPBWUM	BTL 40TL CSWUM	BTL 40TL CBRWUM	BTL 40TL CAWUM	
	BS	BTL 40TL CWRBS	BTL 40TL CPBBS	BTL 40TL CSBS	BTL 40TL CBRBS	BTL 40TL CABS	
	CD	BTL 40TL CWRCD	BTL 40TL CPBCD	BTL 40TL CSCD	BTL 40TL CBRCD	BTL 40TL CACD	
	TR	BTL 40TL CWRTR	BTL 40TL CPBTR	BTL 40TL CSTR	BTL 40TL CBRTR	BTL 40TL CATR	
	TG	BTL 40TL CWR TG	BTL 40TL CPB TG	BTL 40TL CSTG	BTL 40TL CBR TG	BTL 40TL CATG	
	CL	BTL 40TL CWRCL	BTL 40TL CPBCL	BTL 40TL CSCL	BTL 40TL CBRCL	BTL 40TL CACL	
	PG	BTL 40TL CWRPG	BTL 40TL CPBPG	BTL 40TL CSPG	BTL 40TL CBRPG	BTL 40TL CAPG	
	TS	BTL 40TL CWR TS	BTL 40TL CPB TS	BTL 40TL CSTS	BTL 40TL CBR TS	BTL 40TL CATS	
	TM	BTL 40TL CWR TM	BTL 40TL CPB TM	BTL 40TL CSTM	BTL 40TL CBR TM	BTL 40TL CATM	
	NM	BTL 40TL CWR NM	BTL 40TL CPB NM	BTL 40TL CSNM	BTL 40TL CBR NM	BTL 40TL CANM	
	ZUM	BTL 40TL CWR ZUM	BTL 40TL CPB ZUM	BTL 40TL CSZUM	BTL 40TL CBR ZUM	BTL 40TL CAZUM	
	TEAK	W	BTL 40TL WWR	BTL 40TL WPB	BTL 40TL WS	BTL 40TL WBR	BTL 40TL WA
		PE	BTL 40TL VWRPE	BTL 40TL VPBPE	BTL 40TL VSPE	BTL 40TL VBRPE	BTL 40TL VAPE
ENAMELED LAVA STONE	JA	BTL 40TL VWRJA	BTL 40TL VPBJA	BTL 40TL VSJA	BTL 40TL VBRJA	BTL 40TL VAJA	
	MO	BTL 40TL VWRMO	BTL 40TL VPBMO	BTL 40TL VS MO	BTL 40TL VBRMO	BTL 40TL VAMO	
	DU	BTL 40TL VWRDU	BTL 40TL VPBDU	BTL 40TL VS DU	BTL 40TL VBRDU	BTL 40TL VADU	
	LA	BTL 40TL VWR LA	BTL 40TL VPBLA	BTL 40TL VS LA	BTL 40TL VBR LA	BTL 40TL VALA	
	SL	BTL 40TL VWR SL	BTL 40TL VPBSL	BTL 40TL VS SL	BTL 40TL VBR SL	BTL 40TL VASL	

BUTLER SPECIFICATIONS

SIDE TABLE	
REF:	BTL 60T...
WEIGHT:	C: 22,3 kg / 49,1 Lbs W: 10,5 kg / 23,1 Lbs V: 22,2 kg / 48,9 Lbs
INFO:	ASSEMBLING NEEDED



		COATED STAINLESS STEEL					
		WR	PB	S	BR	A	
CERAMIC	WUM	BTL 60T CWRWUM	BTL 60T CPBWUM	BTL 60T CSWUM	BTL 60T CBRWUM	BTL 60T CAWUM	
	BS	BTL 60T CWRBS	BTL 60T CPBBS	BTL 60T CSBS	BTL 60T CBRBS	BTL 60T CABS	
	CD	BTL 60T CWRCD	BTL 60T CPBCD	BTL 60T CSCD	BTL 60T CBRCD	BTL 60T CACD	
	TR	BTL 60T CWRTR	BTL 60T CPBTR	BTL 60T CSTR	BTL 60T CBRTR	BTL 60T CATR	
	TG	BTL 60T CWRTG	BTL 60T CPBTG	BTL 60T CSTG	BTL 60T CBR TG	BTL 60T CATG	
	CL	BTL 60T CWRCL	BTL 60T CPBCL	BTL 60T CSCL	BTL 60T CBRCL	BTL 60T CACL	
	PG	BTL 60T CWRPG	BTL 60T CPBPG	BTL 60T CSPG	BTL 60T CBRPG	BTL 60T CAPG	
	TS	BTL 60T CWRTS	BTL 60T CPBTS	BTL 60T CSTS	BTL 60T CBR TS	BTL 60T CATS	
	TM	BTL 60T CWR TM	BTL 60T CPB TM	BTL 60T CSTM	BTL 60T CBR TM	BTL 60T CATM	
	NM	BTL 60T CWR NM	BTL 60T CPB NM	BTL 60T CSNM	BTL 60T CBR NM	BTL 60T CANM	
	ZUM	BTL 60T CWR ZUM	BTL 60T CPB ZUM	BTL 60T CSZUM	BTL 60T CBR ZUM	BTL 60T CAZUM	
	TEAK	W	BTL 60T WWR	BTL 60T WPB	BTL 60T WS	BTL 60T WBR	BTL 60T WA
	ENAMELED LAVA STONE	PE	BTL 60T VWRPE	BTL 60T VPBPE	BTL 60T VSPE	BTL 60T VBRPE	BTL 60T VAPE
JA		BTL 60T VWRJA	BTL 60T VPBJA	BTL 60T VSJA	BTL 60T VBRJA	BTL 60T VAJA	
MO		BTL 60T VWRMO	BTL 60T VPBMO	BTL 60T VSMO	BTL 60T VBRMO	BTL 60T VAMO	
DU		BTL 60T VWRDU	BTL 60T VPBDU	BTL 60T VS DU	BTL 60T VBRDU	BTL 60T VADU	
LA		BTL 60T VWR LA	BTL 60T VPBLA	BTL 60T VS LA	BTL 60T VBR LA	BTL 60T VALA	
SL		BTL 60T VWR SL	BTL 60T VPBSL	BTL 60T VSSL	BTL 60T VBR SL	BTL 60T VASL	

SIDE TABLE	
REF:	BTL 75TH...
WEIGHT:	C: 27 kg / 59,5 Lbs W: 18 kg / 39,7 Lbs
INFO:	ASSEMBLING NEEDED

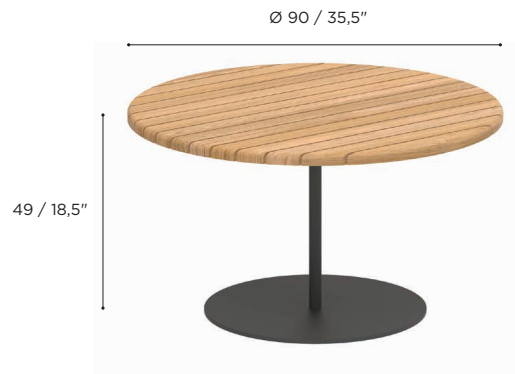


		COATED STAINLESS STEEL					
		WR	PB	S	BR	A	
CERAMIC	WUM	BTL 75TH CWRWUM	BTL 75TH CPBWUM	BTL 75TH CSWUM	BTL 75TH CBRWUM	BTL 75TH CAWUM	
	BS	BTL 75TH CWRBS	BTL 75TH CPBBS	BTL 75TH CSBS	BTL 75TH CBRBS	BTL 75TH CABS	
	CD	BTL 75TH CWRCD	BTL 75TH CPBCD	BTL 75TH CSCD	BTL 75TH CBRCD	BTL 75TH CACD	
	TR	BTL 75TH CWRTR	BTL 75TH CPBTR	BTL 75TH CSTR	BTL 75TH CBRTR	BTL 75TH CATR	
	TG	BTL 75TH CWRTG	BTL 75TH CPBTG	BTL 75TH CSTG	BTL 75TH CBR TG	BTL 75TH CATG	
	CL	BTL 75TH CWRCL	BTL 75TH CPBCL	BTL 75TH CSCL	BTL 75TH CBRCL	BTL 75TH CACL	
	PG	BTL 75TH CWRPG	BTL 75TH CPBPG	BTL 75TH CSPG	BTL 75TH CBRPG	BTL 75TH CAPG	
	TS	BTL 75TH CWR TS	BTL 75TH CPB TS	BTL 75TH CSTS	BTL 75TH CBR TS	BTL 75TH CATS	
	TM	BTL 75TH CWR TM	BTL 75TH CPB TM	BTL 75TH CSTM	BTL 75TH CBR TM	BTL 75TH CATM	
	NM	BTL 75TH CWR NM	BTL 75TH CPB NM	BTL 75TH CSNM	BTL 75TH CBR NM	BTL 75TH CANM	
	ZUM	BTL 75TH CWR ZUM	BTL 75TH CPB ZUM	BTL 75TH CSZUM	BTL 75TH CBR ZUM	BTL 75TH CAZUM	
	TEAK	W	BTL 75TH WWR	BTL 75TH WPB	BTL 75TH WS	BTL 75TH WBR	BTL 75TH WA

BUTLER SPECIFICATIONS

STANDARD / ON REQUEST

SIDE TABLE	
REF:	BTL 90TXH...
WEIGHT:	C: 37,1 kg / 81,8 Lbs W: 22,8 kg / 50,27 Lbs
INFO:	ASSEMBLING NEEDED



		COATED STAINLESS STEEL					
		WR	PB	S	BR	A	
CERAMIC	WUM	BTL 90TXH CWRWUM	BTL 90TXH CPBWUM	BTL 90TXH CSWUM	BTL 90TXH CBRWUM	BTL 90TXH CAWUM	
	BS	BTL 90TXH CWRBS	BTL 90TXH CPBBS	BTL 90TXH CSBS	BTL 90TXH CBRBS	BTL 90TXH CABS	
	CD	BTL 90TXH CWRCD	BTL 90TXH CPBCD	BTL 90TXH CSCD	BTL 90TXH CBRCD	BTL 90TXH CACD	
	TR	BTL 90TXH CWRTR	BTL 90TXH CPBTR	BTL 90TXH CSTR	BTL 90TXH CBRTR	BTL 90TXH CATR	
	TG	BTL90TXH CWR TG	BTL 90TXH CPBTG	BTL 90TXH CSTG	BTL 90TXH CBR TG	BTL 90TXH CATG	
	CL	BTL 90TXH CWRCL	BTL 90TXH CPBCL	BTL 90TXH CSCL	BTL 90TXH CBRCL	BTL 90TXH CA CL	
	PG	BTL 90TXH CWRPG	BTL 90TXH CPBPG	BTL 90TXH CSPG	BTL 90TXH CBRPG	BTL 90TXH CAPG	
	TS	BTL 90TXH CWR TS	BTL 90TXH CPB TS	BTL 90TXH CSTS	BTL 90TXH CBR TS	BTL 90TXH CATS	
	TM	BTL 90TXH CWR TM	BTL 90TXH CPB TM	BTL 90TXH CSTM	BTL 90TXH CBR TM	BTL 90TXH CATM	
	NM	BTL 90TXH CWR NM	BTL 90TXH CPB NM	BTL 90TXH CSNM	BTL 90TXH CBR NM	BTL 90TXH CANM	
	ZUM	BTL 90TXH CWR ZUM	BTL 90TXH CPB ZUM	BTL 90TXH CSZUM	BTL 90TXH CBR ZUM	BTL 90TXH CAZUM	
	TEAK	W	BTL 90TXH WWR	BTL 90TXH WPB	BTL 90TXH WS	BTL 90TXH WBR	BTL 90TXH WA

BUTLER SPECIFICATIONS

DINING TABLE	
REF:	BTL 90RSD...
WEIGHT:	C: 40 kg / 88,2 Lbs W: 31 kg / 68,3 Lbs
INFO:	ASSEMBLING NEEDED



LOW DINING TABLE	
REF:	BTL 90RLD...
WEIGHT:	C: 40 kg / 88,2 Lbs W: 31 kg / 68,3 Lbs
INFO:	ASSEMBLING NEEDED



		COATED STAINLESS STEEL					
		WR	PB	S	BR	A	
CERAMIC	WUM	BTL 90RSD CWRWUM	BTL 90RSD CPBWUM	BTL 90RSD CSWUM	BTL 90RSD CBRWUM	BTL 90RSD CAWUM	
	BS	BTL 90RSD CWRBS	BTL 90RSD CPBBS	BTL 90RSD CSBS	BTL 90RSD CBRBS	BTL 90RSD CABS	
	CD	BTL 90RSD CWRCD	BTL 90RSD CPBCD	BTL 90RSD CSCD	BTL 90RSD CBRCD	BTL 90RSD CACD	
	TR	BTL 90RSD CWRTR	BTL 90RSD CPBTR	BTL 90RSD CSTR	BTL 90RSD CBRTR	BTL 90RSD CATR	
	TG	BTL90RSD CWR TG	BTL 90RSD CPBTG	BTL 90RSD CSTG	BTL 90RSD CBR TG	BTL 90RSD CATG	
	CL	BTL 90RSD CWRCL	BTL 90RSD CPBCL	BTL 90RSD CSCL	BTL 90RSD CBRCL	BTL 90RSD CACL	
	PG	BTL 90RSD CWRPG	BTL 90RSD CPBPG	BTL 90RSD CSPG	BTL 90RSD CBRPG	BTL 90RSD CAPG	
	TS	BTL 90RSD CWR TS	BTL 90RSD CPB TS	BTL 90RSD CSTS	BTL 90RSD CBR TS	BTL 90RSD CATS	
	TM	BTL 90RSD CWR TM	BTL 90RSD CPB TM	BTL 90RSD CSTM	BTL 90RSD CBR TM	BTL 90RSD CATM	
	NM	BTL 90RSD CWR NM	BTL 90RSD CPB NM	BTL 90RSD CSNM	BTL 90RSD CBR NM	BTL 90RSD CANM	
	ZUM	BTL 90RSD CWR ZUM	BTL 90RSD CPB ZUM	BTL 90RSD CSZUM	BTL 90RSD CBR ZUM	BTL 90RSD CAZUM	
	TEAK	W	BTL 90RSD WWR	BTL 90RSD WPB	BTL 90RSD WS	BTL 90RSD WBR	BTL 90RSD WA

		COATED STAINLESS STEEL					
		WR	PB	S	BR	A	
CERAMIC	WUM	BTL 90RLD CWRWUM	BTL 90RLD CPBWUM	BTL 90RLD CSWUM	BTL 90RLD CBRWUM	BTL 90RLD CAWUM	
	BS	BTL 90RLD CWRBS	BTL 90RLD CPBBS	BTL 90RLD CSBS	BTL 90RLD CBRBS	BTL 90RLD CABS	
	CD	BTL 90RLD CWRCD	BTL 90RLD CPBCD	BTL 90RLD CSCD	BTL 90RLD CBRCD	BTL 90RLD CACD	
	TR	BTL 90RLD CWRTR	BTL 90RLD CPBTR	BTL 90RLD CSTR	BTL 90RLD CBRTR	BTL 90RLD CATR	
	TG	BTL90RLD CWR TG	BTL 90RLD CPBTG	BTL 90RLD CSTG	BTL 90RLD CBR TG	BTL 90RLD CATG	
	CL	BTL 90RLD CWRCL	BTL 90RLD CPBCL	BTL 90RLD CSCL	BTL 90RLD CBRCL	BTL 90RLD CACL	
	PG	BTL 90RLD CWRPG	BTL 90RLD CPBPG	BTL 90RLD CSPG	BTL 90RLD CBRPG	BTL 90RLD CAPG	
	TS	BTL 90RLD CWR TS	BTL 90RLD CPB TS	BTL 90RLD CSTS	BTL 90RLD CBR TS	BTL 90RLD CATS	
	TM	BTL 90RLD CWR TM	BTL 90RLD CPB TM	BTL 90RLD CSTM	BTL 90RLD CBR TM	BTL 90RLD CATM	
	NM	BTL 90RLD CWR NM	BTL 90RLD CPB NM	BTL 90RLD CSNM	BTL 90RLD CBR NM	BTL 90RLD CANM	
	ZUM	BTL 90RLD CWR ZUM	BTL 90RLD CPB ZUM	BTL 90RLD CSZUM	BTL 90RLD CBR ZUM	BTL 90RLD CAZUM	
	TEAK	W	BTL 90RLD WWR	BTL 90RLD WPB	BTL 90RLD WS	BTL 90RLD WBR	BTL 90RLD WA

BUTLER SPECIFICATIONS

STANDARD / ON REQUEST

DINING TABLE	
REF:	BTL 120RSD...
WEIGHT:	C: 55,2 kg / 121,7 Lbs W: 41,3 kg / 91 Lbs
INFO:	ASSEMBLING NEEDED



		COATED STAINLESS STEEL					
		WR	PB	S	BR	A	
CERAMIC	WUM	BTL 120RSD CWRWUM	BTL 120RSD CPBWUM	BTL 120RSD CSWUM	BTL 120RSD CBRWUM	BTL 120RSD CAWUM	
	BS	BTL 120RSD CWRBS	BTL 120RSD CPBBS	BTL 120RSD CSBS	BTL 120RSD CBRBS	BTL 120RSD CABS	
	CD	BTL 120RSD CWRCD	BTL 120RSD CPBCD	BTL 120RSD CSCD	BTL 120RSD CBRCD	BTL 120RSD CACD	
	TR	BTL 120RSD CWRTR	BTL 120RSD CPBTR	BTL 120RSD CSTR	BTL 120RSD CBRTR	BTL 120RSD CATR	
	CL	BTL 120RSD CWRCL	BTL 120RSD CPBCL	BTL 120RSD CSCL	BTL 120RSD CBRCL	BTL 120RSD CACL	
	PG	BTL 120RSD CWRPG	BTL 120RSD CPBPG	BTL 120RSD CSPG	BTL 120RSD CBRPG	BTL 120RSD CAPG	
	TS	BTL 120RSD CWRTS	BTL 120RSD CPBTS	BTL 120RSD CSTS	BTL 120RSD CBRTS	BTL 120RSD CATS	
	TM	BTL 120RSD CWRTM	BTL 120RSD CPBTM	BTL 120RSD CSTM	BTL 120RSD CBRTM	BTL 120RSD CATM	
	NM	BTL 120RSD CWRNM	BTL 120RSD CPBNM	BTL 120RSD CSNM	BTL 120RSD CBRNM	BTL 120RSD CANM	
	ZUM	BTL 120RSD CWRZUM	BTL 120RSD CPBZUM	BTL 120RSD CSZUM	BTL 120RSD CBRZUM	BTL 120RSD CAZUM	
	TEAK	W	BTL 120RSD WWR	BTL 120RSD WPB	BTL 120RSD WS	BTL 120RSD WBR	BTL 120RSD WA

LOW DINING TABLE	
REF:	BTL 120RLD...
WEIGHT:	C: 54,8 kg / 120,8 Lbs W: 40,9 kg / 90,2 Lbs
INFO:	ASSEMBLING NEEDED



		COATED STAINLESS STEEL					
		WR	PB	S	BR	A	
CERAMIC	WUM	BTL 120RLD CWRWUM	BTL 120RLD CPBWUM	BTL 120RLD CSWUM	BTL 120RLD CBRWUM	BTL 120RLD CAWUM	
	BS	BTL 120RLD CWRBS	BTL 120RLD CPBBS	BTL 120RLD CSBS	BTL 120RLD CBRBS	BTL 120RLD CABS	
	CD	BTL 120RLD CWRCD	BTL 120RLD CPBCD	BTL 120RLD CSCD	BTL 120RLD CBRCD	BTL 120RLD CACD	
	TR	BTL 120RLD CWRTR	BTL 120RLD CPBTR	BTL 120RLD CSTR	BTL 120RLD CBRTR	BTL 120RLD CATR	
	CL	BTL 120RLD CWRCL	BTL 120RLD CPBCL	BTL 120RLD CSCL	BTL 120RLD CBRCL	BTL 120RLD CACL	
	PG	BTL 120RLD CWRPG	BTL 120RLD CPBPG	BTL 120RLD CSPG	BTL 120RLD CBRPG	BTL 120RLD CAPG	
	TS	BTL 120RLD CWRTS	BTL 120RLD CPBTS	BTL 120RLD CSTS	BTL 120RLD CBRTS	BTL 120RLD CATS	
	TM	BTL 120RLD CWRTM	BTL 120RLD CPBTM	BTL 120RLD CSTM	BTL 120RLD CBRTM	BTL 120RLD CATM	
	NM	BTL 120RLD CWRNM	BTL 120RLD CPBNM	BTL 120RLD CSNM	BTL 120RLD CBRNM	BTL 120RLD CANM	
	ZUM	BTL 120RLD CWRZUM	BTL 120RLD CPBZUM	BTL 120RLD CSZUM	BTL 120RLD CBRZUM	BTL 120RLD CAZUM	
	TEAK	W	BTL 120RLD WWR	BTL 120RLD WPB	BTL 120RLD WS	BTL 120RLD WBR	BTL 120RLD WA

CUSHIONS

OPEN-CELLED:

Open-celled cushion technology

Royal Botania cushions are 100% water and UV resistant.

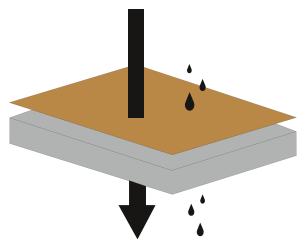
The foam has an open-celled structure, creating a high permeability level.

This means that when water gets in, it is easy for it to evaporate.

Your outdoor furniture cushions will dry very quickly after exposure to water or moisture.

During production of the foam, an anti-bacterial and anti-fungal treatment is applied.

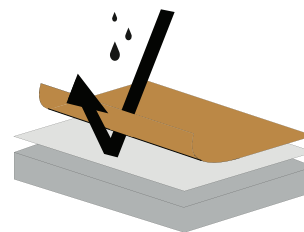
This is done without using CFC's, keeping the process environmentally friendly.



MEMBRANE:

Royal Botania cushions are created by laminating our membrane to high-performance textiles, then sealing them with an innovative solution for waterproof protection.

The Royal Botania membrane is the heart of all our cushions. The PTFE-layer contains over 9 billion microscopic pores per square inch. These pores are 20.000 times smaller than a water droplet, but 700 times larger than a water vapor molecule, which makes the Royal Botania membrane completely waterproof from the outside, while allowing perspiration to escape from the inside. The membrane consists of a MICRO-fiber, preventing the penetration of body oils, food or insect repellents that could otherwise penetrate the cushion.



PROTECTIVE COVERS

To protect your Royal Botania furniture from the elements when not used, we provide PU coated polyester covers for every element as well as for modular combinations. The latter are custom made to fit the lay-out of your lounge set.

The seams on those protective covers are sealed by silicone strips to prevent water from entering. Always make sure that the furniture and the cushions are completely dry before putting on the covers to avoid the formation of mould.

MAINTENANCE

Even the best of materials and components, will get dirty when placed outside. Even though our furniture is well protected against the elements, proper maintenance is a must. For that purpose we offer a wide array of maintenance products, all especially developed to make sure your furniture will stand out, even after many years outside. To select the right product for the right application, check our maintenance manual on www.royalbotania.com/maintenance

WARRANTY

Royal Botania products are made from the finest materials, and with the utmost care, so as to give you a lifetime of enjoyment. That is when correctly used and properly maintained. Hidden flaws in materials can never be excluded for 100%. These can eventually cause issues. In the event of quality issues arising from such defects, Royal Botania obviously takes its responsibility. Our warranty clauses can be found on www.royalbotania.com/warranty

TEAK & MAHOGANY

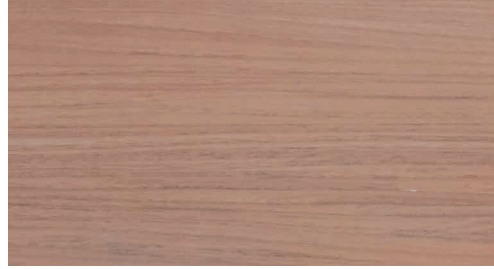
AS ROYAL BOTANIA NEVER COMPROMISES ON QUALITY, ONLY CAREFULLY SELECTED MATURE TEAKWOOD IS USED IN OUR PRODUCTS. ALL OF IT HARVESTED IN STRICT ACCORDANCE WITH OUR ENVIRONMENTAL POLICIES. TEAK WOOD'S RENOWNED DURABILITY IS DUE TO ITS HIGH CONTENT OF NATURAL OILS. THE LIMITED ABSORPTION OF MOISTURE PROTECTS THE WOOD FROM WARPING AND GIVES IT ENORMOUS STABILITY. IN ADDITION, TEAK IS HIGHLY RESISTANT TO ATTACKS BY PESTS. IT IS BECAUSE OF THESE QUALITIES, AS WELL AS ITS EXCEPTIONALLY ATTRACTIVE HUE AND STRUCTURE, THAT TEAK IS WIDELY CONSIDERED "THE NOBLEST OF ALL WOOD TYPES".

MAHOGANY IS A HARDWOOD WITH A REDDISH COLOUR THAT IS WIDELY USED FOR BOAT BUILDING, AS WELL AS FURNITURE MANUFACTURING.

TEAK
REF: W



OILED MAHOGANY
REF: MHOT

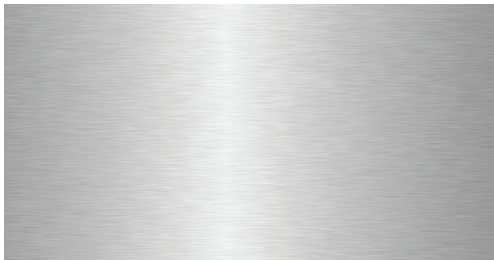


STAINLESS STEEL

STAINLESS STEEL IS A FERROUS ALLOY WITH INCREASED CORROSION RESISTANCE DUE TO THE ADDITION OF CHROME AND NICKEL. CHLORINE, THE GREATEST ENEMY OF STAINLESS STEEL, CAN CAUSE A TYPE OF CORROSION KNOWN AS "PITTING". FOR THIS REASON, IT IS RECOMMENDED THAT IN COASTAL LOCATIONS THE METAL BE GIVEN AN ELECTROPOLISHING TREATMENT, IN ORDER TO FURTHER INCREASE ITS RESISTANCE TO CORROSION. THE FURNITURE FRAMES OF THE WAVE IS SUPPLIED WITH AN ELECTROPOLISHED FINISH AS STANDARD.

FOR THE NINIX, O-ZON, QT & TABOELA RANGES WE RECOMMEND THE OPTIONAL ELECTROPOLISHING TREATMENT OF THE FRAME IF IT IS TO BE USED IN A CORROSIVE ENVIRONMENT.

BRUSHED STAINLESS STEEL
REF: SS

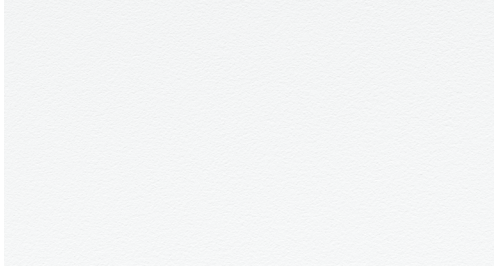


ELECTROPOLISHED STAINLESS STEEL
REF: EP

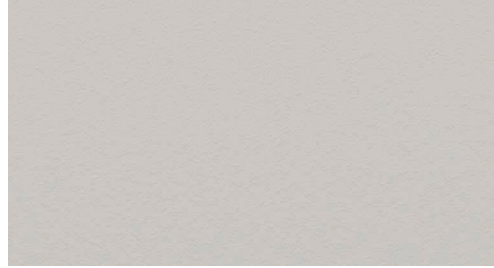


POWDER COATING COLOURS

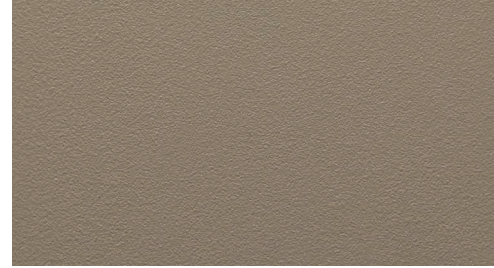
WHITE
REF: WR



PEBBLE
REF: PB



SAND
REF: S



BRONZE
REF: BR



ANTHRACITE
REF: A



OLIVE
REF: OL



FIBER

OLEFIN FIBER IS A SYNTHETIC FIBER MADE FROM POLYPROPYLENE. THE ADVANTAGE OF THIS FIBER IS ITS STRENGTH, COLOUR FASTNESS AND COMFORT. ALSO IT IS VERY RESISTANT TO STAINING AND DIFFERENT WEATHER CONDITIONS.

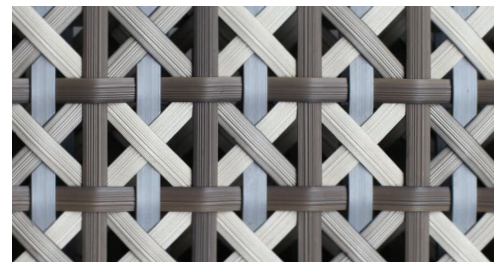
JIVE COLLECTION (OLEFIN FIBER)



SAMBA COLLECTION (OLEFIN FIBER)



CALYPSO COLLECTION (POLYTHYLENE FIBER)



FENSI COLLECTION



CERAMIC

THE CERAMIC TOPS ARE MADE FROM NATURAL CLAYS, SO SMALL COLOUR GRADATIONS CAN OCCUR. THIS MAKES EACH TABLE UNIQUE.

WHITE
REF: WUM



CEMENTO LUMINOSO
REF: CL



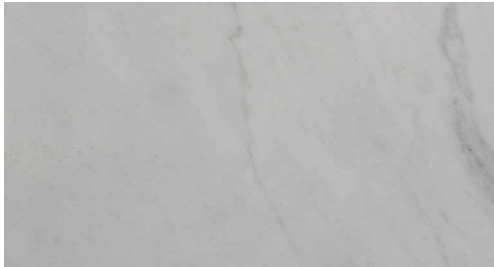
PEARL GREY
REF: PG



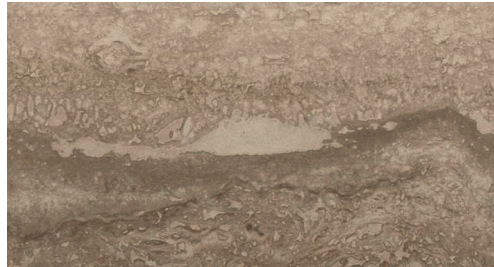
NERO MARQUINA
REF: NM



BIANCO STATUARIO
REF: BS



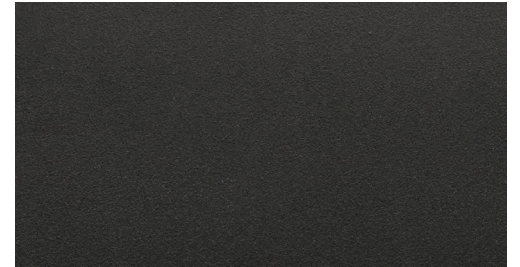
TRAVERTINO
REF: TR



TAUPE GREY
REF: TG



BLACK
REF: ZUM



CEPPO DOLOMITICA
REF: CD



TERRA SABBIA
REF: TS



TERRA MARRONE
REF: TM



CONCRETE

WE USE AN ULTRA-HIGH PERFORMANCE CONCRETE REINFORCED BY NATURAL MINERAL COMPONENTS AND ORGANIC FIBERS. THANKS TO ITS DISCONTINUOUS PORE STRUCTURE AND CRACK-BRIDGING FIBERS, IT IS VIRTUALLY IMPERVIOUS. PENETRATION OF CHLORIDE IONS IS ALSO SIGNIFICANTLY REDUCED AND THUS PERFORMS EXCEPTIONALLY WELL IN HIGHLY CORROSIVE ENVIRONMENTS SUCH AS NEAR BEACHES.

CEMENT GREY

REF: CG



ENAMELED LAVA STONES

LAVA STONES WITH A VITREOUS ENAMEL COATING. FUSED AT 850°C THE ENAMEL BECOMES VERY HARD AND EXTREMELY RESISTANT TO ALL WEATHER CONDITIONS.

PEARL

REF: PE



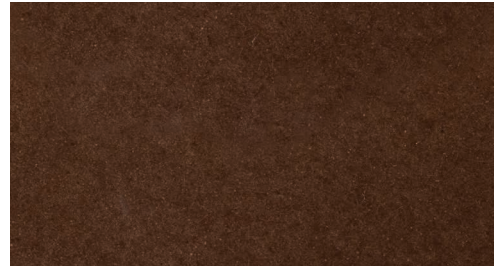
MOON

REF: MO



LAVA

REF: LA



SLATE

REF: SL



JADE

REF: JA



DUSK

REF: DU

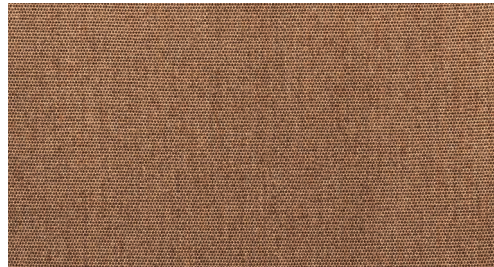


CATEGORY A FABRICS ACRYLIC

WHITE
REF: ...WU - CAT.: A - ACRYLIC



COCONUT
REF: ...CC - CAT.: A - ACRYLIC



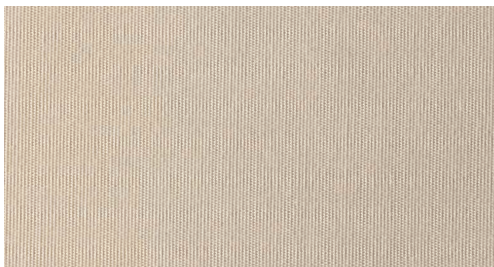
CAPPUCCINO
REF: ...CAU - CAT.: A - ACRYLIC



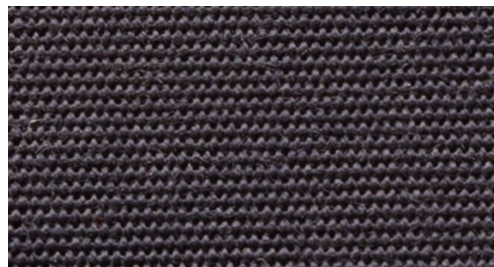
ROCK
REF: ...ROU - CAT.: A - ACRYLIC



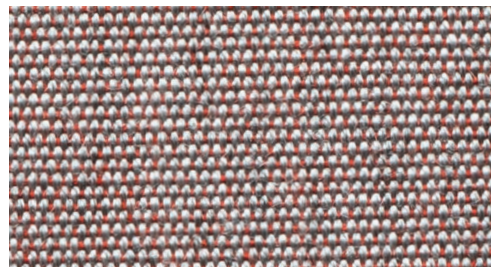
ECRU
REF: ...EU - CAT.: A - ACRYLIC



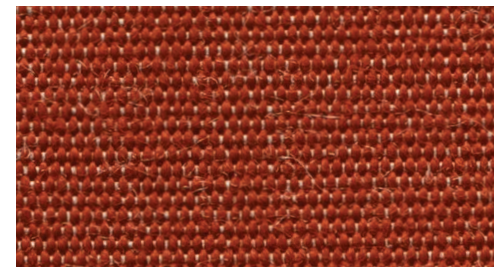
NAVY BLUE
REF: ...NBU - CAT.: A - ACRYLIC



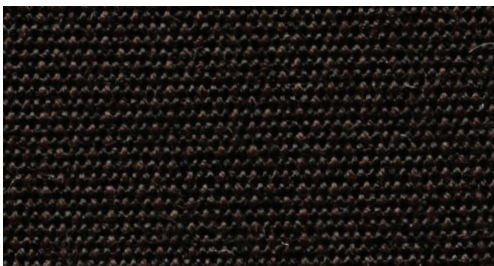
ROSE
REF: ...RO - CAT.: A - ACRYLIC



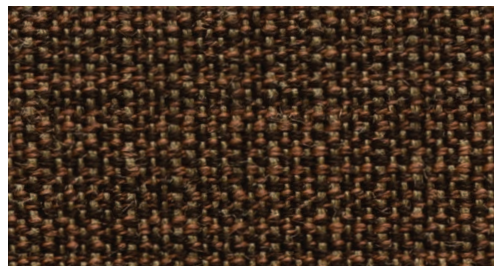
TERRA
REF: ...TER - CAT.: A - ACRYLIC



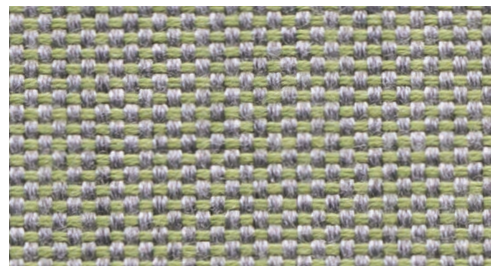
BLACK
REF: ...ZU - CAT.: A - ACRYLIC



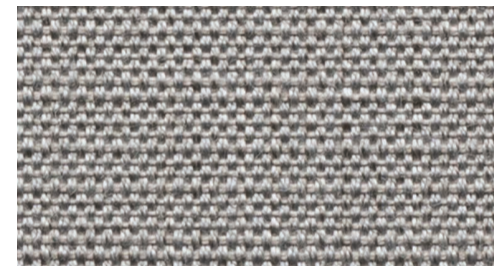
CHOCOLAT LINEN
REF: ...CHL - CAT.: A - ACRYLIC



SAGE LINEN
REF: ...SL - CAT.: A - ACRYLIC



FROST LINEN
REF: ...FL - CAT.: A - ACRYLIC



CATEGORY B FABRICS ACRYLIC & POLYPROPYLENE

WHITE HEAVY
REF: ...WAH - CAT.: B - POLYPROPYLENE



LIGHT BLUE HEAVY
REF: ...LBH - CAT.: B - POLYPROPYLENE



AZURE BLUE HEAVY
REF: ...AZH - CAT.: B - POLYPROPYLENE



ROCK HEAVY
REF: ...ROH - CAT.: B - POLYPROPYLENE



SAND HEAVY
REF: ...SAH - CAT.: B - POLYPROPYLENE



SAFFRON HEAVY
REF: ...SFH - CAT.: B - POLYPROPYLENE



RED WINE HEAVY
REF: ...RWH - CAT.: B - POLYPROPYLENE



CARMINE HEAVY
REF: ...CH - CAT.: B - POLYPROPYLENE



MOSS HEAVY
REF: ...MH - CAT.: B - POLYPROPYLENE



CARAMEL HEAVY
REF: ...CAH - CAT.: B - POLYPROPYLENE



AUBERGINE HEAVY
REF: ...AUH - CAT.: B - POLYPROPYLENE



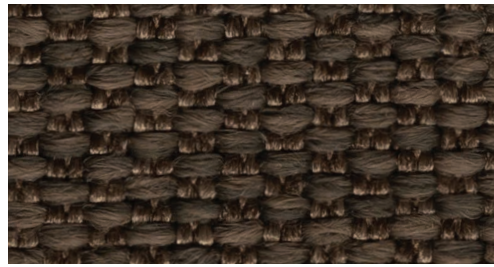
GRANITE HEAVY
REF: ...GRH - CAT.: B - POLYPROPYLENE



PITCH BLACK HEAVY
REF: ...ZUPH - CAT.: B - POLYPROPYLENE



DARK BROWN TWIN
REF: ...DBT - CAT.: B - POLYPROPYLENE



WHITE TWIN
REF: ...WUT - CAT.: B - POLYPROPYLENE



CATEGORY B FABRICS ACRYLIC & POLYPROPYLENE

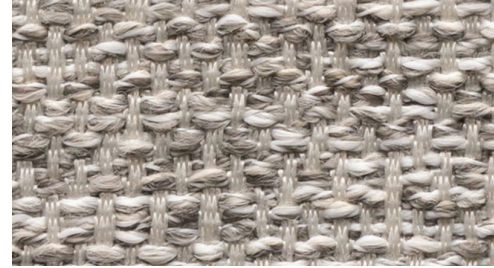
NATURAL WHITE DOT
REF: ...NWD - CAT.: B - POLYPROPYLENE



NATURAL GREY DOT
REF: ...NGD - CAT.: B - POLYPROPYLENE



NATURAL SILVER DOT
REF: ...NSD - CAT.: B - POLYPROPYLENE



NATURAL ECRU DOT
REF: ...NED - CAT.: B - POLYPROPYLENE



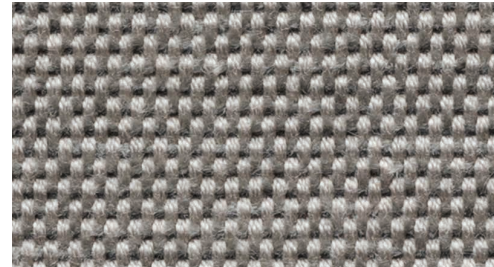
NATURAL LINEN DOT
REF: ...NLD - CAT.: B - POLYPROPYLENE



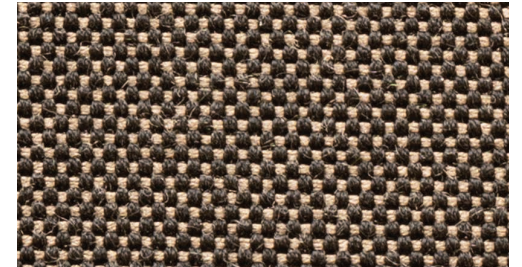
STONE FLAX
REF: ...SF - CAT.: B - ACRYLIC



DESERT STONE FLAX
REF: ...DSF - CAT.: B - ACRYLIC

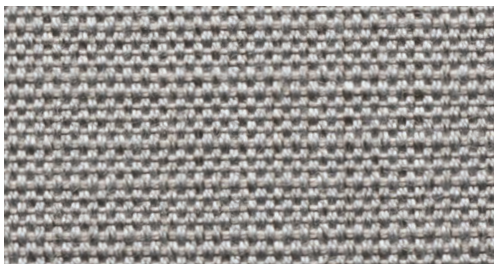


MARBLE FLAX
REF: ...MAF - CAT.: B - ACRYLIC

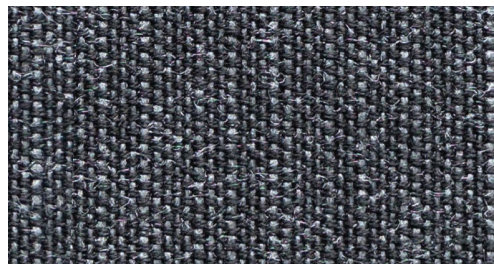


CATEGORY B/C LAMINATED FABRICS ACRYLIC

FROST LINEN LAMINATED
REF: ...FLL - CAT.: B - ACRYLIC



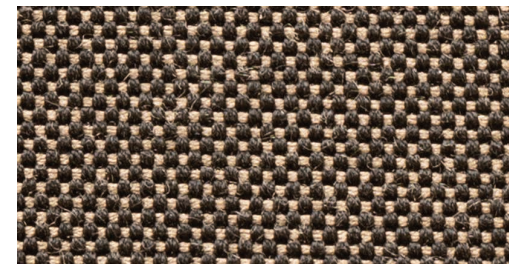
TUXEDO LINEN LAMINATED
REF: ...TULL - CAT.: B - ACRYLIC



DESERT STONE FLAX LAMINATED
REF: ...DSFL - CAT.: C - ACRYLIC



MARBLE FLAX LAMINATED
REF: ...MAFL - CAT.: C - ACRYLIC

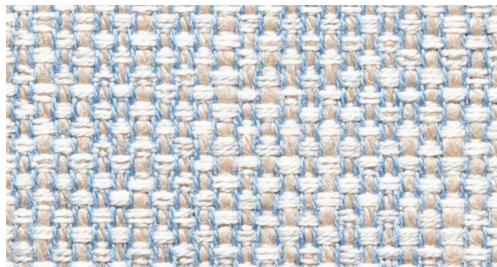


CATEGORY C FABRICS ACRYLIC & POLYPROPYLENE

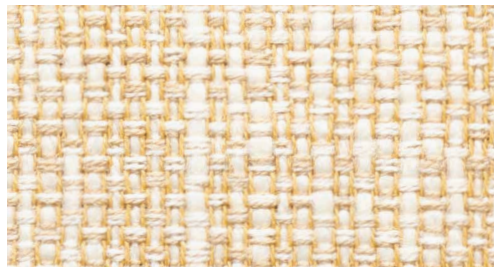
PASTEL SAND
REF: ...PAS - CAT.: C - ACRYLIC



PASTEL BLUE
REF: ...PAB - CAT.: C - ACRYLIC



PASTEL YELLOW
REF: ...PAY - CAT.: C - ACRYLIC



PASTEL COCONUT
REF: ...PAC - CAT.: C - ACRYLIC



PASTEL GREEN
REF: ...PAG - CAT.: C - ACRYLIC



PASTEL ORANGE
REF: ...PAO - CAT.: C - ACRYLIC



PASTEL RED
REF: ...PAR - CAT.: C - ACRYLIC



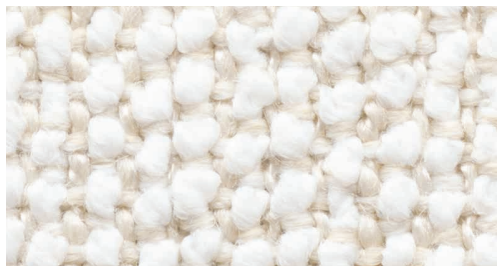
MOSS
REF: ...MOS - CAT.: C - POLYPROPYLENE



BOUCLE SAND
REF: ...BOS - CAT.: C - POLYPROPYLENE



BOUCLE WHITE
REF: ...BOW - CAT.: C - POLYPROPYLENE



BOUCLE GREY
REF: ...BOG - CAT.: C - POLYPROPYLENE



BOUCLE BLUE
REF: ...BOB - CAT.: C - POLYPROPYLENE



ECRU LINEN
REF: ...EUL - CAT.: C - ACRYLIC



JUNIPER GREEN
REF: ...JG - CAT.: C - ACRYLIC



AUBERGINE MESH
REF: ...AUM - CAT.: C - ACRYLIC



NIGHT BLUE
REF: ...NB - CAT.: C - ACRYLIC



CATEGORY C FABRICS ACRYLIC & POLYPROPYLENE

VANILLE VELVET
REF: ...VAV - CAT.: C - ACRYLIC



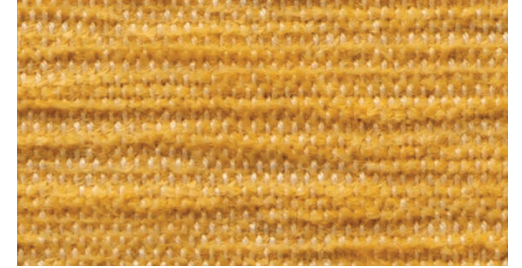
ECRU VELVET
REF: ...EUV - CAT.: C - ACRYLIC



SALMON VELVET
REF: ...SAV - CAT.: C - ACRYLIC



SAFFRON VELVET
REF: ...SFV - CAT.: C - ACRYLIC



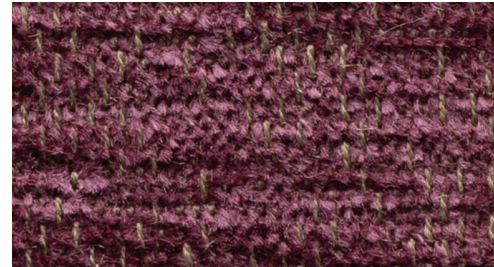
DARK BROWN VELVET
REF: ...DBV - CAT.: C - ACRYLIC



TERRA VELVET
REF: ...TEV - CAT.: C - ACRYLIC



AUBERGINE VELVET
REF: ...AUV - CAT.: C - ACRYLIC



ICE BLUE VELVET
REF: ...IBV - CAT.: C - ACRYLIC



SILVER VELVET
REF: ...SIV - CAT.: C - ACRYLIC



IRON GREY VELVET
REF: ...IGV - CAT.: C - ACRYLIC



ORANGE CHEVRON
REF: ...ORC - CAT.: C - POLYPROPYLENE



OLD ROSE
REF: ...OLR - CAT.: C - POLYPROPYLENE



LIGHT BOUCLE WHITE
REF: ...LBW - CAT.: C - POLYPROPYLENE



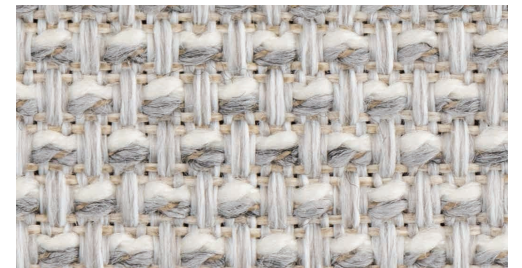
LIGHT BOUCLE SAND
REF: ...LBS - CAT.: C - ACRYLIC



LIGHT BOUCLE GREY
REF: ...LBG - CAT.: C - POLYPROPYLENE



GREY MESH
REF: ...GM - CAT.: C - ACRYLIC

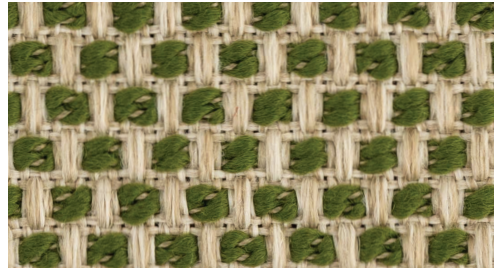


CATEGORY C FABRICS ACRYLIC & POLYPROPYLENE

CAMEL MESH
REF: ...CM - CAT.: C - POLYPROPYLENE



MOSS MESH
REF: ...MM - CAT.: C - POLYPROPYLENE



SAND MESH
REF: ...SM - CAT.: C - POLYPROPYLENE



CATEGORY C FABRICS POLYSKIN

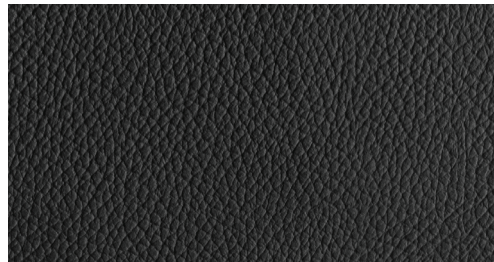
ONLY AVAILABLE FOR STRAPPY, STYLETTO & OSTREA COLLECTION!

POLYSKIN IS A SYNTHETIC ALL WEATHER LEATHER IMITATION THAT IS EXTREMELY UV AND WATER RESISTANT.

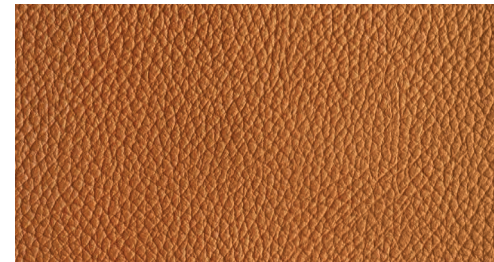
CAPPUCCINO
REF: ...SCA - CAT.: C - POLYSKIN



BLACK
REF: ...SBL - CAT.: C - POLYSKIN



COGNAC
REF: ...SCO - CAT.: C - POLYSKIN



BATYLINE

THE SLINGS ON METAL FRAMED CHAIRS AND LOUNGERS ARE MADE OF BATYLINE® FABRICS, A WOVEN POLYESTER FIBER PROTECTED BY A PVC COATING. THIS COATING GUARANTEES EXCEPTIONAL RESISTANCE TO CLIMATIC CONDITIONS AND UV EXPOSURE. THE FACT THAT THERE IS NO MOISTURE ABSORPTION RESULTS IN QUICK-DRYING, LITTLE SENSITIVITY TO STAINING AND EASY CLEANING.

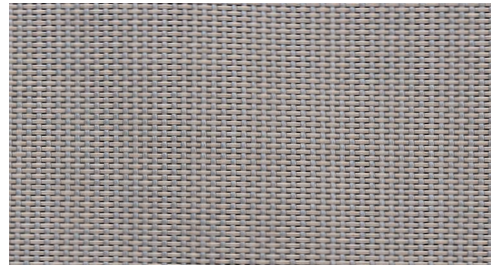
WHITE
REF: ...WU



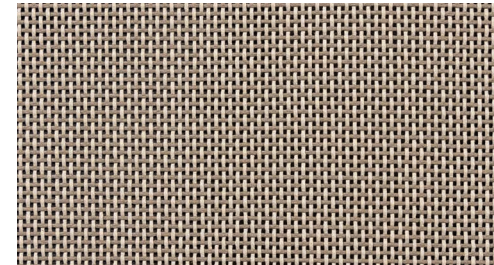
WHITE (FOR NNX(L) - OZN - WV)
REF: ...WUC



PEARL GREY
REF: ...PG



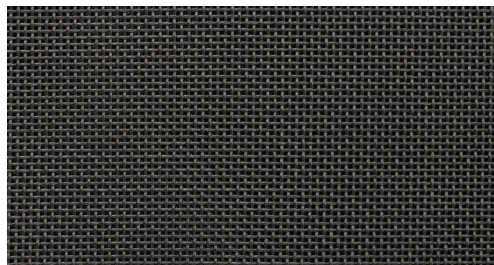
CAPPUCCINO
REF: ...CAU



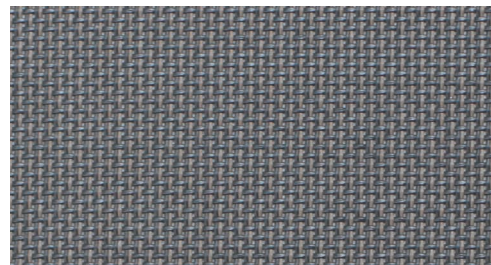
BLACK
REF: ...ZU



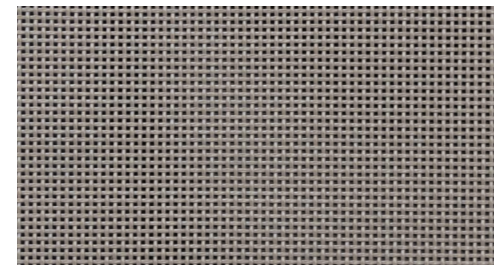
BLACK (FOR NNX(L) - OZN - WV)
REF: ...ZUC



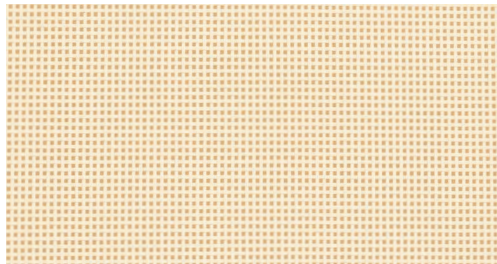
GRAPHITE
REF: ...GRP



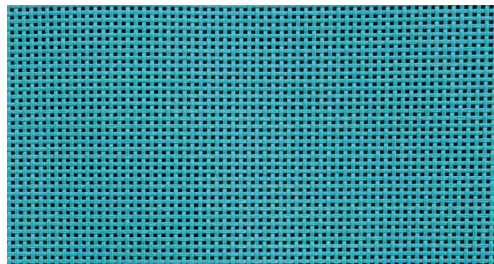
BROWN
REF: ...BRU



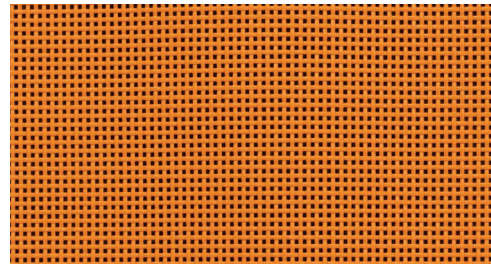
ECRU
REF: ...EU



TURQUOISE
REF: ...TQF



ORANGE
REF: ...ORU



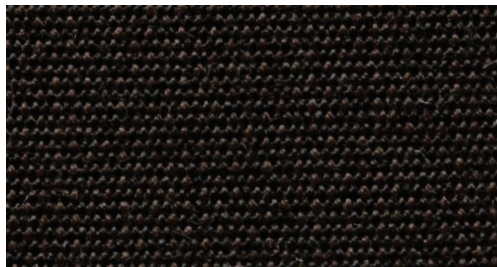
PARASOL FABRICS

FOR OUR SHADY AND BLOOM PARASOL WE USE A THICKER FABRIC WITH A SPECIAL COATING TO FURTHER PROTECT THEM FROM THE ELEMENTS.

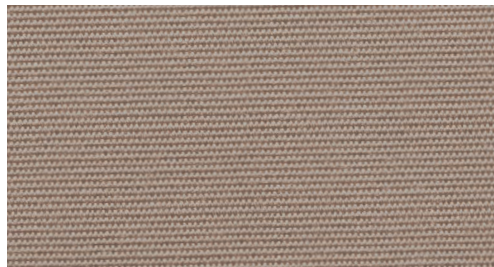
WHITE
REF: ...WU - CAT.: A - ACRYLIC



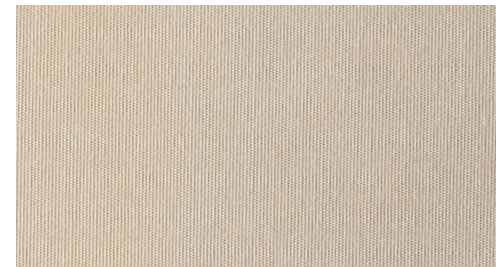
BLACK
REF: ...ZU - CAT.: A - ACRYLIC



CAPPUCCINO
REF: ...CAU - CAT.: A - ACRYLIC



ECRU
REF: ...EU - CAT.: A - ACRYLIC



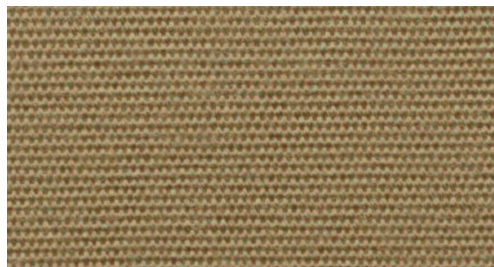
BLUE
REF: ...BU - CAT.: C - ACRYLIC



FONDANT
REF: ...FOU - CAT.: A - ACRYLIC



MOKKA
REF: ...MU - CAT.: A - ACRYLIC



ROCK
REF: ...ROU - CAT.: A - ACRYLIC



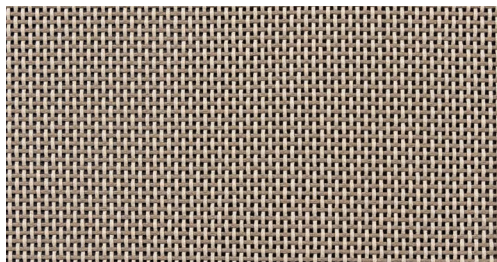
PARASOL BATYLINE

THE BATYLINE FOR OUR OAZZ IS WOVEN THIGHT AND GIVEN A COATING TO FURTHER PROTECT THEM FROM THE ELEMENTS.

WHITE
REF: ...WU



CAPPUCCINO
REF: ...CAU



BLACK
REF: ...ZU

