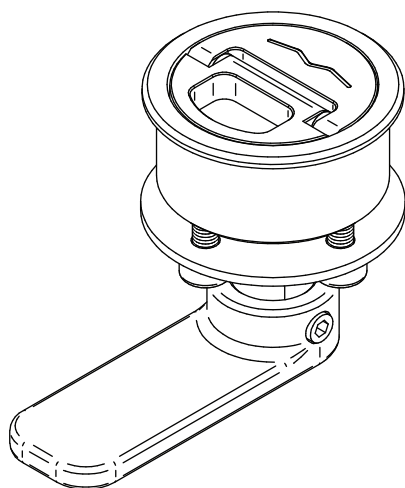


Installation instruction

Cam Latch. Aluminium / Stainless steel

Cam Latch: LH50, LH70, LH50X, LH70X.
Extension Cam: LH010



CAUTION. Read all instructions carefully before installing and using this product.

1. REQUIRED FOR INSTALLATION.



Template



Hole saw



Non acidic degreaser



Polyurethane marine sealant



Anti-corrosion lubricant



Threadlocker


Installation instruction

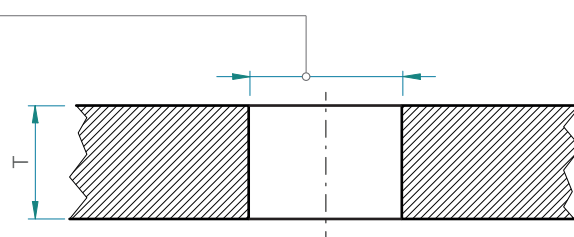
Cam Latch. Aluminium / Stainless steel

1. TEMPLATE AND DRILLING.

Mark the hole, and use a hole saw to cut hole.

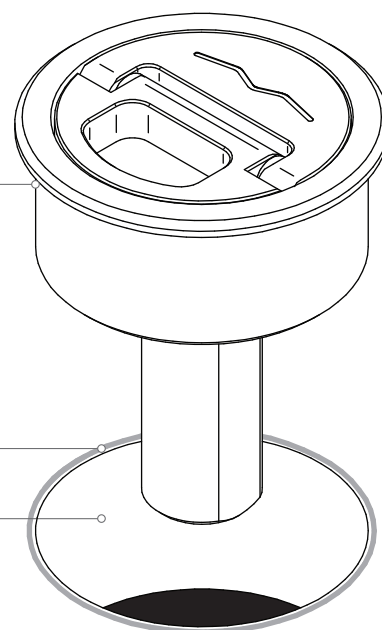


Type		T min	T max
LH50 / LH50X	Ø 45 mm	20 mm	35 mm
LH70 / LH70X	Ø 65 mm	20 mm	35 mm



2. PREPARING THE LATCH.

Carefully clean the latch with a non-acidic degreaser.
Then apply a small bead of marine sealant.

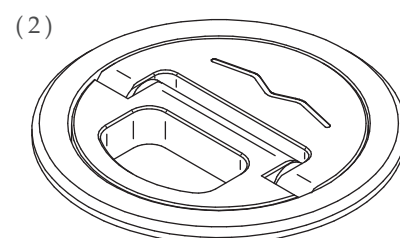
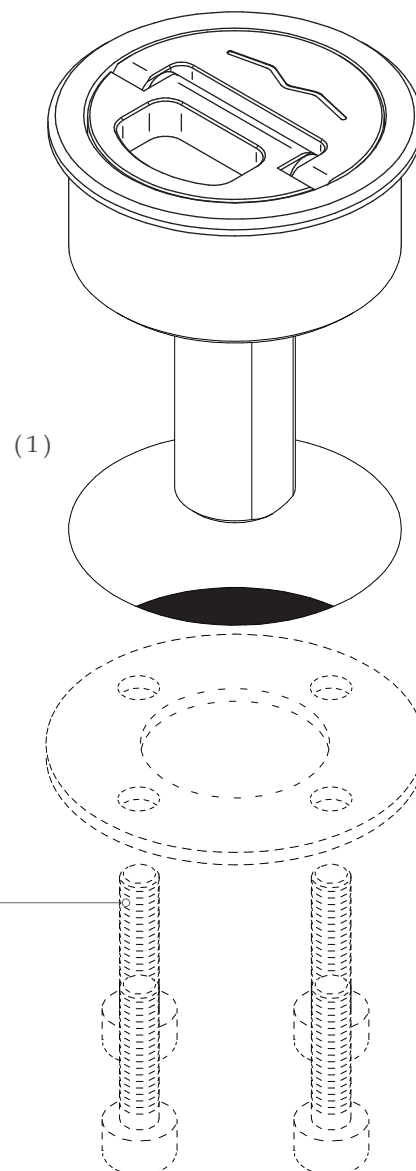


Installation instruction

Cam Latch. Aluminium / Stainless steel

3. FITTING

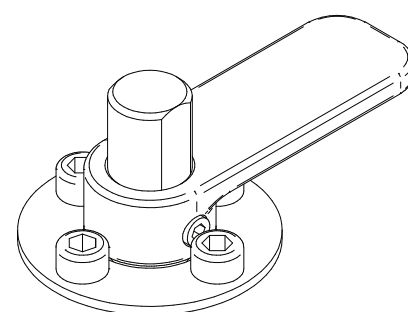
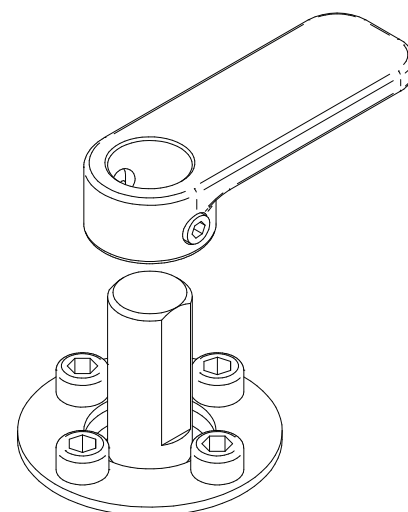
Place the latch into the deck, then place its backing plate and screw (we recommend to use anti-corrosion lubricant into the screw holes). Tighten firmly the screws.



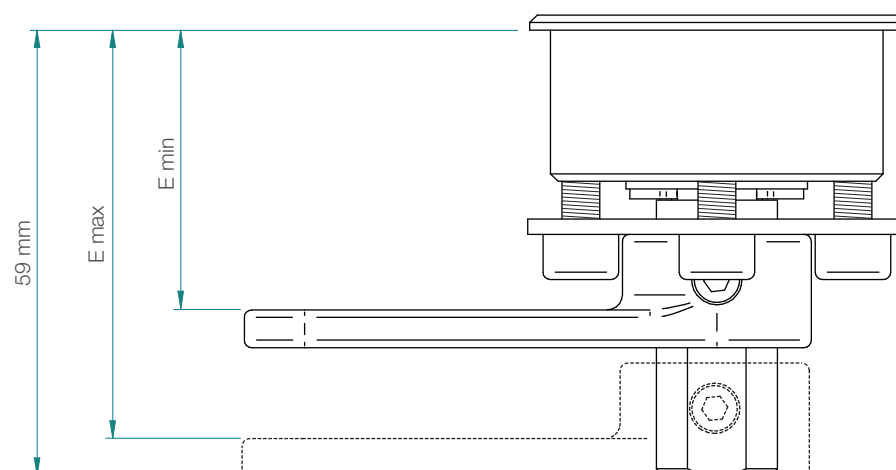
Installation instruction

Cam Latch. Aluminium / Stainless steel

4.1. INSTALLATION WITH STANDARD CAM



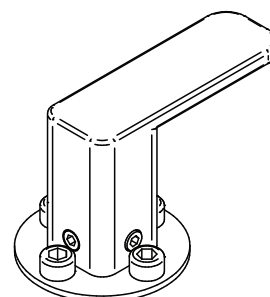
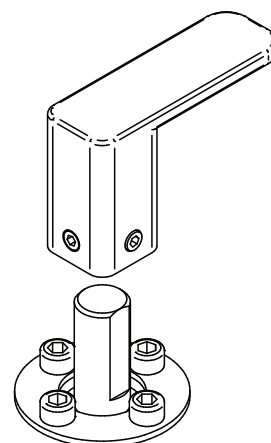
Type	E min	E max
LH50 / LH50X/LH70 / LH70X	30 mm	54 mm



Installation instruction

Cam Latch. Aluminium / Stainless steel

4.2. INSTALLATION WITH EXTENSION CAM (LH010)



Type	E min	E max
LH50 / LH50X/LH70 / LH70X	67 mm	85 mm

