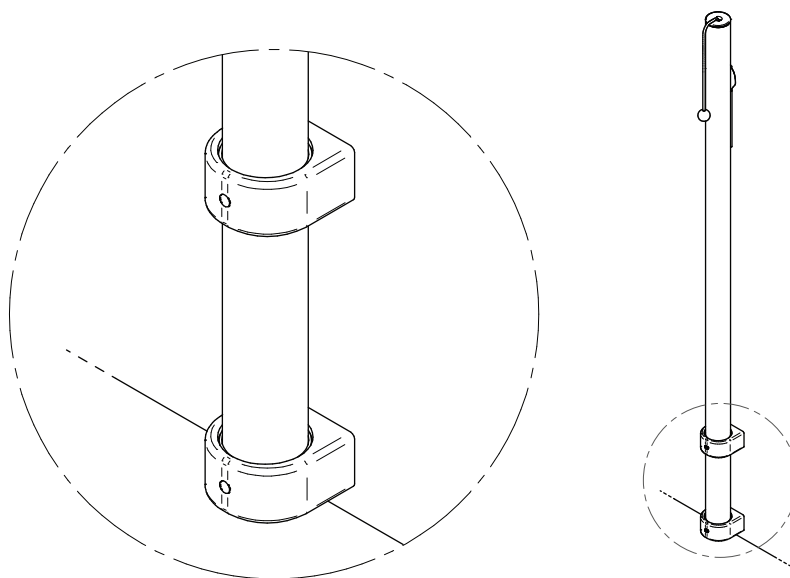


## Installation instruction

### *Awning post side mount kit.*

AWNING POST SUPPORT: AWM60, AWM60A, AWM80, AWM80A, AWM100, AWM100A.



**CAUTION.** Read all instructions carefully before installing and using this product.

#### 1. REQUIRED FOR INSTALLATION.



Template



Hole saw



Non acidic degreaser



Threadlocker



Polyurethane marine sealant



Anti-corrosion lubricant



Wrenches



Drill  
(only for external installation)



Screwdriver and countersunk  
screws Ø 5,5 mm  
(only for external installation)

## Installation instruction

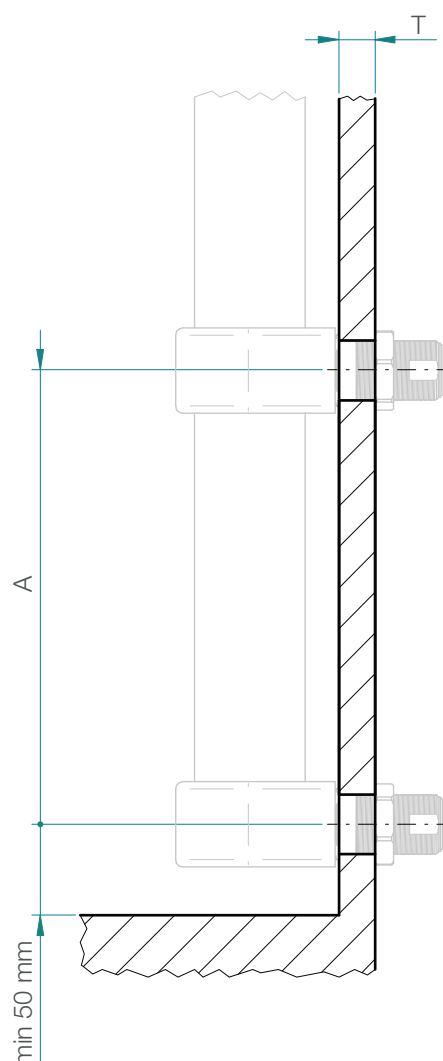
### *Awning post side mount kit.*

#### 1. TEMPLATE.

Mark the holes, and use a hole saw to cut hole for the socket of the mounting bracket.



Type		T min	T max	A min
AWM60	Ø 32 mm	10 mm	44 mm	250 mm
AWM60A	Ø 32 mm			250 mm
AWM80 / AWM100	Ø 32 mm	10 mm	44 mm	300 mm
AWM80A / AWM100A	Ø 32 mm			300 mm

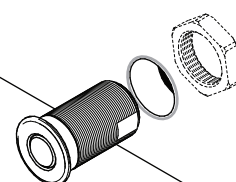
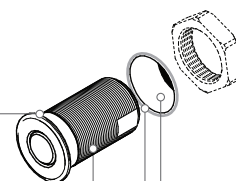




## Installation instruction

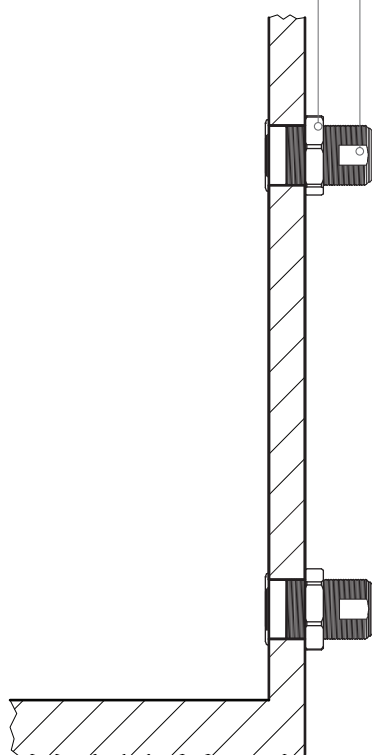
### *Awning post side mount kit.*

#### 2.1 INTERNAL INSTALLATION

Carefully clean the base of the socket with a non-acid degreasing agent. Then apply a small bead of marine sealant. Apply some anti-corrosion lubricant into the drilled hole, and some thread locker to the thread. Insert the socket inside the hole, and tighten the nut with the wrench. Remove the excess of marine sealant on the top.



Type		
AWM60 / AWM80 / AWM100	40 mm	30 mm



## Installation instruction

### *Awning post side mount kit.*

#### 2.2 EXTERNAL INSTALLATION (ONLY FOR AWM60A, AWM80A, AWM100A)

Carefully clean the base of the socket with a non-acid degreasing agent. Then apply a small bead of marine sealant. Apply some anti-corrosion lubricant into the drilled hole. Use eight Ø5.5 self-tapping countersunk screws to fix the two PB20AX to the wall.

Remove the excess of marine sealant on the top.

