



**THE BONY ORBIT
AND PARANASAL SINUSES**

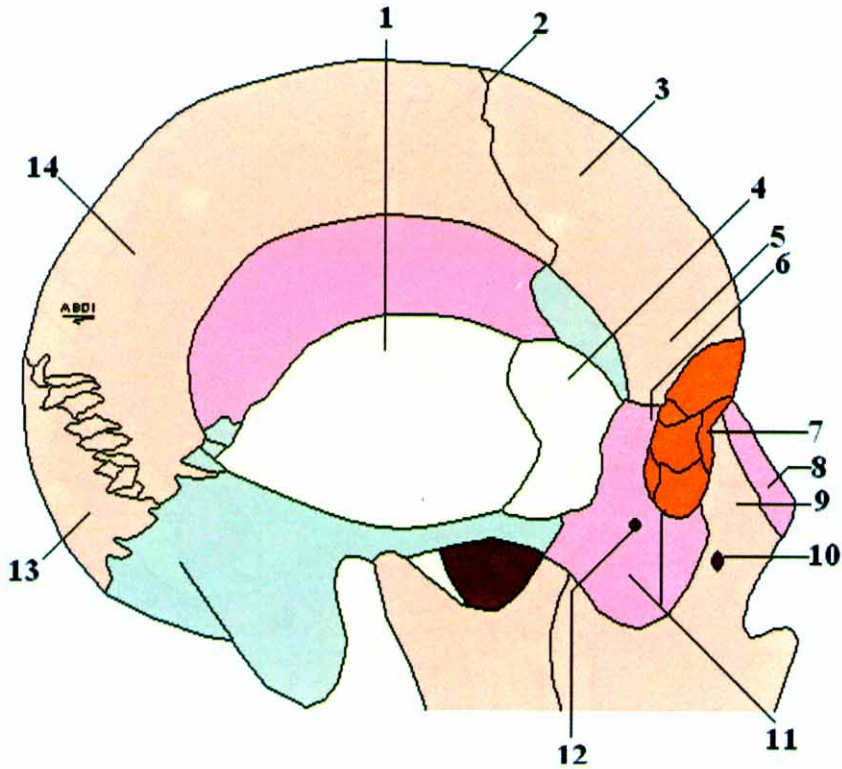


Figure 1.2 Osteocranium (skull) and orbit from right lateral aspect

- 1-Squama (lepidoid) of temporal bone
- 2-Coronal suture
- 3-Frontal bone
- 4-Major plate of the sphenoid bone
- 5-Zygomatic process of the frontal bone
- 6-Frontal process of the zygomatic bone
- 7-Lacrimal bone and fossa
- 8-Nasal bone
- 9-Maxilla bone
- 10-Infraorbital foramen
- 11-Zygomatic bone
- 12-Zygomaticofacial foramen
- 13-Occipital bone
- 14-Parietal (bregmatic) bone

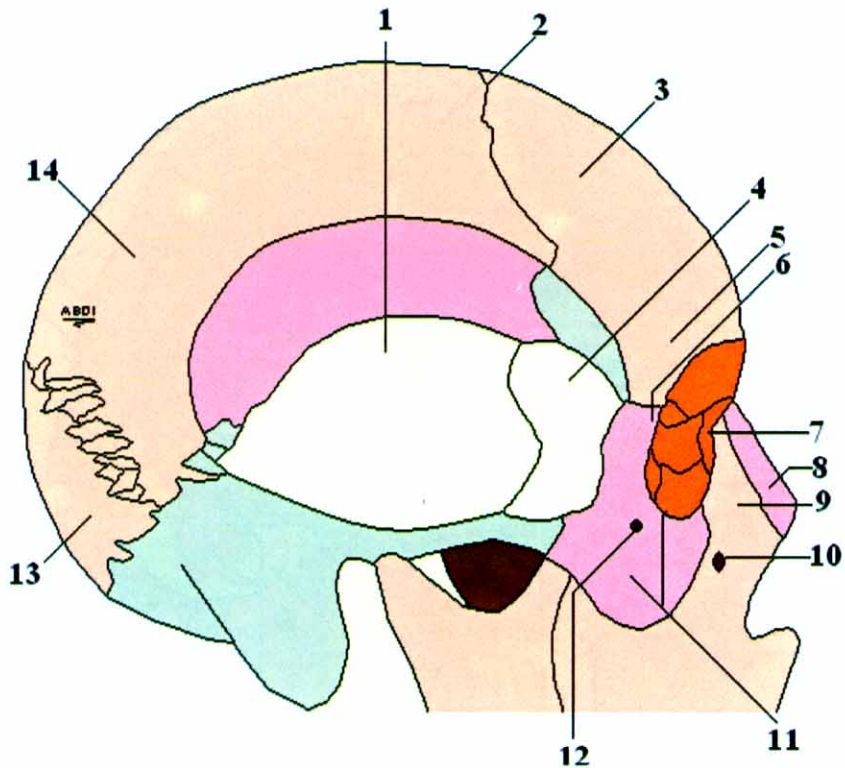


Figure 1.2 Osteocranium (skull) and orbit from right lateral aspect

- 1-Squama (lepidoid) of temporal bone
- 2-Coronal suture
- 3-Frontal bone
- 4-Major plate of the sphenoid bone
- 5-Zygomatic process of the frontal bone
- 6-Frontal process of the zygomatic bone
- 7-Lacrimal bone and fossa
- 8-Nasal bone
- 9-Maxilla bone
- 10-Infraorbital foramen
- 11-Zygomatic bone
- 12-Zygomaticofacial foramen
- 13-Occipital bone
- 14-Parietal (bregmatic) bone

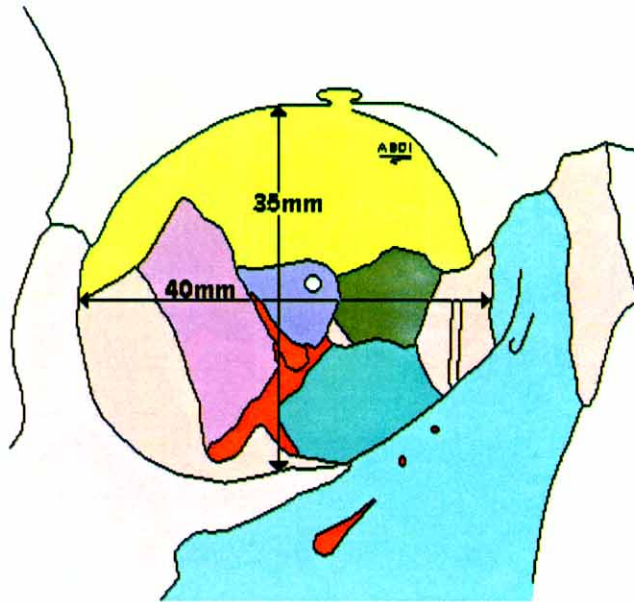


Figure 1.4 Orbit dimensions

Volume	27-30 cm ³
Height	35 mm
Width	40 mm
Medial wall length	45 mm

The orbit resembles a quadrilateral pyramid, whose base is directed forwards and whose apex is between the optic foramen and medial end of the superior orbital fissure. Medial walls of both orbits are approximately parallel. The distance between them at the front (nasal) is 1 cm and at the back 2, 5 cm.

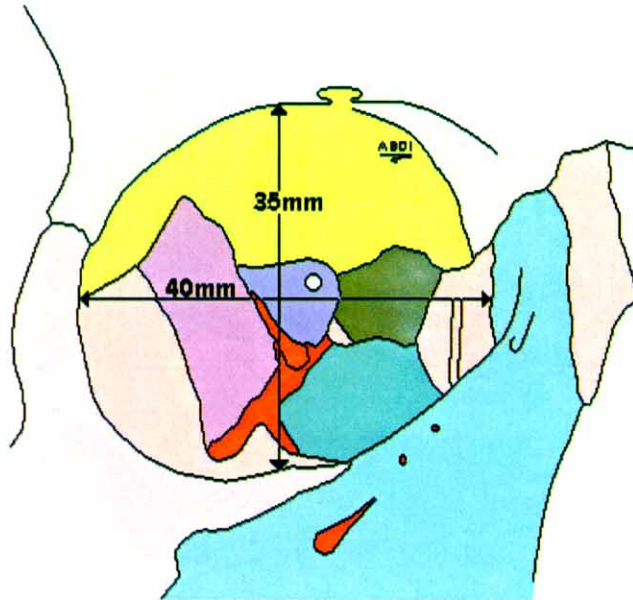


Figure 1.4 Orbit dimensions

Volume	27-30 cm ³
Height	35 mm
Width	40 mm
Medial wall length	45 mm

The orbit resembles a quadrilateral pyramid, whose base is directed forwards and whose apex is between the optic foramen and medial end of the superior orbital fissure. Medial walls of both orbits are approximately parallel. The distance between them at the front (nasal) is 1 cm and at the back 2, 5 cm.