

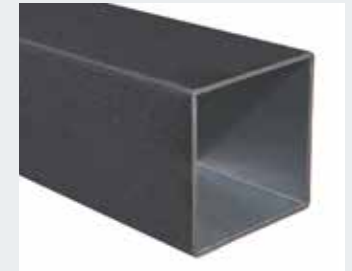




LA VALLETTA



Aluminium



## Alu Poker/Double Dark

I Struttura modulare in alluminio composta da 2 (Double) o 4 (Poker) ombrelloni ancorati ad un unico sostegno studiata per la copertura di ampie superfici con il minimo ingombro.

UK Aluminium structure made of 2 (Double) or 4 (Poker) parasols fixed at the same pole, suitable for big surfaces and minimum encumbrance.

D Alugestell mit 2 (Double) oder 4 (Poker) Schirmen, die am selben Mast befestigt sind. Raumsparend und fuer grosse Flaechen geeignet.

F Structure en aluminium avec 2 (Double) ou 4 (Poker) parasols fixés à un mat. Pour grandes surfaces avec encombrement minimum.

E Estructura modular de aluminio compuesta por 2(doble) o 4 (poker) parasoles unidos por un solo mástil, muy adecuado para amplias superficies con poco espacio.

NL Parasolmast met 2 (Double) of 4 (Poker) parasols. Deze parasols (Double ca. 25 m<sup>2</sup> en Poker ca. 50 m<sup>2</sup>) zijn aan 1 mast bevestigd. Zijn daardoor ruimtebesparend en ze er geschikt voor grotere oppervlakten en terrassen.



## 50. Alu Poker / Double - Dark / White

<p><b>I</b></p> <p>Struttura robusta composta da 4 ombrelloni (Poker) oppure da 2 ombrelloni (Double). Telaio in alluminio e componenti in acciaio; verniciato a polveri colore antracite/bianco. Accessori in nylon.</p>	<p><b>UK</b></p> <p>Strong structure made of 4 cantilever parasols (Poker) or 2 cantilever parasols (Double). Frame in coated aluminium and steel components powder coated anthracite grey/white. Accessories made of nylon.</p>	<p><b>D</b></p> <p>Starke Gestell mit 4 Pendelschirmen (Poker) oder 2 Pendelschirmen (Double) Gestell aus pulverbeschichtetem Aluminium und Bestandteile aus Stahl Farbe Anthrazitgrau/Weiß. Zubehoer aus Nylon.</p>
<p><b>F</b></p> <p>Structure robuste avec 4 parasols (Poker) ou 2 parasols (Double). Armature en aluminium vernis, composants en acier couleur gris anthracite/blanc. Accessoires en nylon.</p>	<p><b>E</b></p> <p>Estructura robusta que se compone de 4 parasoles (Poker) – 2 parasoles (Double). Herrajes: Aluminio y acero color gris antracita/blanco. Accesorios de nylon.</p>	<p><b>NL</b></p> <p>Zware mast met 4 (Poker) – 2 (Double) vrijhangende parasols: Mast en baleinen: Grijs geëpoxeerd aluminium. Overige metalen delen: Grijs/Wit geëpoxeerd staal.</p>

↑ COD	MEASURES		CHARACTERISTICS					
	KG	M <sup>3</sup>	Icon 1	Icon 2	Icon 3	Icon 4	Icon 5	
6,0x6,0 C6060 APO C6060 APW	170	1,00	120x120	ALU DARK	ALU DARK	ALU WHITE	ALU WHITE	18x30
7,0x7,0 C7070 APO C7070 APW	185	1,00	120x120	ALU DARK	ALU DARK	ALU WHITE	ALU WHITE	18x30
3,0x6,0 C3060 ADO C3060 ADW	100	0,80	120x120	ALU DARK	ALU DARK	ALU WHITE	ALU WHITE	18x30
3,5x7,0 C3570 ADO C3570 ADW	110	0,80	120x120	ALU DARK	ALU DARK	ALU WHITE	ALU WHITE	18x30

FINISHING						COLOUR RANGE							OPTIONAL			BASES					
					INOX		ACRYL 3 50 GR										N°2 BC5151	N°4 BC5151	N°2 BV5050	N°4 BV5050	FISSAGGIO TERRA
							A1	A1	T2	T3	T6	T7	S1				N°6 BC5050	N°12 BC5050		INGROUND FIX	
•	•	•	•	•	•	•								•	•	•	/		/		
•	•	•	•	•	•	•								•	•	•	/		/		
•	•	•	•	•	•	•								•	•	•	/		/		
•	•	•	•	•	•	•								•	•	•	/		/		



*Struttura modulare composta da 4 o 2 ombrelloni ancorati a un unico sostegno centrale; dimensione totale della copertura 6x6 o 7x7 mt.*

*TELAIO: Interamente in alluminio e acciaio verniciati a polveri epossidiche colore grigio antracite. Sostegno verticale sez. 12x12 cm. Stecche in alluminio sezione 18x30 mm, facilmente intercambiabili abbinata a corone in plastica brevettate per aumentare la resistenza e durata, semplificare la manutenzione e migliorare il design. Con aggancio singolo dedicato per ogni stecca. Tutti gli accessori sono zincati antiruggine e verniciati a polveri colore antracite. Viteria in acciaio inox. Apertura e chiusura con meccanismo a manovella con elegante cornice coprifilo. Stecca blocco antivento per rendere l'ombrellone più stabile e resistente in caso di vento e con possibilità di inclinazione. Inclusa base a croce metallica.*

*TESSUTO: Acrilico Dralon 350gr/m2 impermeabilizzato e trattato antimuffa garantito Teflon. Con camino antivento. Tinto massa. 5 anni di garanzia.*

*Strong structure made of 4 or 2 parasols hanging on one central post. The dimension of the whole structure is 6x6 or 7x7 m. FRAME: Aluminum and steel structure epoxy coated anthracite grey color. Side post section 12x12 cm. Easily interchangeable strong aluminum ribs, section 18x30, with patented plastic crowns that increase the resistance and life, simplify the maintenance and improve the design. Ribs are properly fixed to the crown one by one. All components are epoxy coated anthracite grey color. Accessories in stainless steel. Easy opening and closing with crank mechanism, whose steel wire is covered by a smart covering. With wind stop rib for a better stability in windy condition and to allow the inclination of the parasol. Cross metal base included.*

*FABRIC: Acrylic Dralon 350gr/m2 waterproof Teflon and anti-mold treated. With wind cap. Solution dyed. 5 years warranty*



.Dimensione (metri)  
.Dimensions (meters)  
.Masse (Meter)  
.Dimensions (metrès)  
.Dimensiones ( en metros)  
.Afmeting in (meters)



.Stecche  
.Ribs  
.Streben  
.Baleines  
.Varillas  
.Baleinen



.Piastrre cemento  
.Cement slabs  
.Kiesbetonplatten  
.Dalles ciment  
.Planchas de cemento  
.Betontegel



.Viteria in inox e ottone nichelato  
.Screws in Stainless steel and nickel plated brass  
.Edelstahlschrauben und vernickeltes Messing  
.Visserie inox et laiton nickelé  
.Tornillos en acero inoxidable y bronce niquelado  
.Schroeven van rvs en vernikkeld messing



.Codice  
.Code  
.Artikelcode  
.Code  
.Código  
.Artikelcode



.Set canaline  
.Raingutter set  
.Regerinnen  
.Set gouttières  
.Canalizador Lluvias  
.Set regengoten



.Fodero  
.Cover bag  
.Schutzhuelle  
.Housse  
.Forro  
.Afdekhoes



Pag. 68

.Tipo finitura della struttura/sostegno/componenti  
.Finishing for frame/structure/components  
.Ausfuehrung des Gestells/der Struktur/der Bestandteile  
.Finition armature/structure/composants  
.Tipo de acabado de la estructura/Soportes/componente



.Lunghezza  
.Length  
.Laenge  
.Longueur  
.Longitud  
.Lengte



.Con base/supporto  
.With base/support  
.Mit Staender/Huelse  
.Avec base/support  
.Con base/ soporte  
.Inclusief standaard



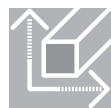
.Doppia carrucola  
.Double pulley  
.Doppelter Seilzug  
.Double poulie  
.Doble polea  
.Dubbele katrollen



.Colore dei componenti/stecche  
.Component/Ribs colour  
.Farbe der Bestandteile und Streben  
.Couleur des composants et baleines  
.Color de los componentes ò piezas/Varillas ò listones



.Peso  
.Weight  
.Gewicht  
.Poids  
.Peso  
.Gewicht



.Sezione stecche  
.Rib section  
.Strebenprofil  
.Section baleines  
.Sección varillas  
.Profil baleinen



.Sistema telescopico  
.Telescopic system  
.Teleskopsystem  
.Système telescopique  
.Sistema telescópico  
.Telescoop systeem



.Stecca con sistema "easy change"  
.Ribs with "easy change" system  
.Streben mit "easy change" System  
.Baleines avec "easy change" système  
.Varillas con sistema de " cambio fácil"  
.Baleinen met het "easy change" systeem



.Volume (m3)  
.Volume (m3)  
.Volumen (m3)  
.Volume (m3)  
.Volumen (m3)  
.Volume (m3)



.Camino antiviento  
.Wind cap  
.Windfang  
.Souffle  
.Chimenea antiviento  
.Windvang



.Sistema retrattile  
.Retractile system  
.Einziehbares System  
.Système retractile  
.Sistema retráctil  
.Inklapbaar systeem



.Ø Palo (mm)  
.Ø Pole (mm)  
.Ø Mast (mm)  
.Ø Mat (mm)  
.Diametro mm (asta)  
.Ø Mast (mm)



.Volant  
.Valance  
.Volant  
.Volant  
.Faldón  
.Volant



.Base girevole a 360°C  
.Revolving base 360°C  
.360°C drehbarer Staender  
.Base tournant 360°C  
.Base giratoria 360°  
.360° draaibaar



.Massima Stabilità Ottenibile  
.Maximum Obtainable Stability  
.Maximal Erhaeltliche Stabilitaet  
.Maximum De Stabilité Realisable  
.Maxima Estabilidad Posible  
.Maximaal Bereikbare Stablieit



.Sezione sostegno (mm)  
.Support section (mm)  
.Mastprofil (mm)  
.Section support (mm)  
.Sección soporte (mm)  
.Mast (mm)



.Blocco antivento  
.Wind stop  
.Windstop  
.Block antivent  
.Freno para el viento  
.Windstop



.Inclinazione fino a 20°  
.Inclination up to 20°  
.Neigung bis zu 20°  
.Inclination jusqu'à 20°  
.Inclinación hasta 20°



.Peso consigliato in condizioni normali  
.Recommended weight in normal condition  
.Empfohlenes gewicht unter normalen bedingungen  
.Poids recommande dans des conditions normales  
.Peso recomendado en condiciones normales  
.Aanbevolen gewicht onder normale omstandigheden



.Ottonatura  
.Brassfinishing  
.Vermessigungen  
.Laiton doré  
.Terminaciones doradas  
.Koper beslag



.Con meccanismo manovella  
.With winding mechanism  
.Mit Kurbelmechanismus  
.Avec mécanisme manivelle  
.Con manivela  
.Met opwindmechanisme



.Inclinazione fino a 60°  
.Inclination up to 60°  
.Neigung bis zu 60°  
.Inclination jusqu'à 60°  
.Inclinación hasta 60°



.Peso minimo richiesto  
.Minimum ballast required  
.Erforderliches mindestgewicht  
.Poids minimum requis  
.Peso minimo requerido  
.Minimaal vereist gewicht