



“POWER LIGHT” SERIES FOR NON MAINTAINED EMERGENCY LUMINAIRES



TECHNICAL CHARACTERISTICS (for LED MODULE Specifications see page 2)	
GRL-21	
OPERATION VOLTAGE	220-240V AC/50-60Hz
MAXIMUM POWER CONSUMPTION	5.6W/7.5VA
BATTERY (Pb)	6V/4Ah
BATTERY PROTECTION	From overcharge and deep discharge
INDICATIONS - CONTROLS	Power indicator, battery charge indicator, TEST button
CHARGING TIME	24h
MINIMUM AUTONOMOUS DURATION	90 min
LIGHT SOURCE	White LEDs
EMERGENCY ILLUMINATION	790lm
DEGREES OF COVER PROTECTION	IP42
PRODUCED IN ACCORDANCE WITH	EN 60598-1, EN 60598-2-22, EN 55015, EN 61547, EN 61000-3-2, EN 61000-3-3
OPERATION TEMPERATURE RANGE	5 to 40 °C
RELATIVE HUMIDITY	Up to 95%
CONSTRUCTION MATERIALS	ABS/PC, PC
EXTERNAL DIMENSIONS	302 x 94 x 345 mm.
TYPICAL WEIGHT	2080gr.
GUARANTEE	3 years (1 year for the battery)

**Thank you for your trust in our products
Olympia Electronics - European manufacturer**

GENERAL

These luminaires are used indoors (ta 40°C) where emergency light is needed. Each luminaire must be permanently connected to mains power supply. In normal operation the *power* indicator lights and the *charge* indicator blinks to show that the batteries are in charging condition. In case of a mains power supply failure the *power* and the *charge* indicators turns off and the luminaire will light the spot lamps automatically in emergency mode. When the mains power supply is restored the device turns to normal operation.

INSTALLATION

To install the luminaire follow the installation instructions on page 3.

OPERATION

When the device is powered from the mains, the *charge* indicator blinks and confirms the charging of the batteries. When the batteries are charged, it lights constantly. If it does not light, probably, the batteries are disconnected. If it does not light and the batteries are connected, then contact the technician. As long as the charge indicator blinks, the batteries of the luminaire are

charging and in this period, any autonomy test must be avoided. When the charging circle is complete, the indicator lights continuously (it can be used as an indication of a power interruption). The batteries charging is done by a 3 stages technological advanced procedure, to ensure the appropriate and full charging of the batteries. The *power* indicator confirms the proper connection to the mains. The TEST button, has a dual use. If pressed instantly while the device is connected to the mains, the device simulates the power interruption, by lighting the lamps for 3". In this way, we can control the driver circuit of the lamps and the lamps as indicated in paragraph 3 in the text below.

DIMMING OPTION

When the voltage is interrupted, with corresponding pressings of the button, we can choose the illumination of 100%, 50%, 33% or turned off, either to increase the autonomy time or not to consume the battery power unnecessarily. This option is canceled when the network is restored.

ATTENTION!!!

1. Operations for installation, maintenance or testing must be done by authorized

personnel only.

- The device must be connected to the mains power supply through a fuse dependent by the total amount of the line's power load.
- It is suggested to check every month the indication LED for battery charging, and by pushing instantly the TEST button to check the emergency circuit and the lamps. If the luminaire does not light contact the installer.
- It is suggested to check every 6 months the minimum autonomous duration by disconnecting the mains power supply. Count the time that the lamps light and in case of less time than the minimum autonomous duration the batteries must be replaced. If the measured time is considerably less than the minimum autonomous duration contact the installer. The replacement of the battery and the light source must be done using parts of the same type, by the manufacturer or by a competent person.
- In case of inactive use for a period greater than 2 months, disconnect the battery by pulling out the battery's connector.

6. It is not allowed to discard batteries in to common trash bins, they must be discarded only in battery recycling points. Do not incinerate.



The light source contained in this luminaire shall only be replaced by the manufacturer, or his agent, or a similar qualified person.

NOTE! The light source is non-user replaceable.

LED CHARACTERISTICS

LED CHARACTERISTICS	
GRL-21	
Manufacturer	Olympia Electronics S.A.
Model Number	2605163
Voltage Range	20-25V
Nominal Power	2.8W
Connections	Cable connection between main pcb and led module
Temperature (tc)	50 °C max.

INDICATION LED STATUS (with the mains power supply connected)

CHARGE		POWER	
○	Disconnected battery / not charging	○	No mains power supply
●	Charged battery	●	Normal operation mode
⚡	Battery under charge		

○ Indicator OFF ● Indicator ON ⚡ Indicator Blinking

Battery replacement.

It can be done only by a competent person and after the mains interruption.

- Follow the step 2 of the installation procedure.
- Disconnect the cables and remove the old battery.
- Connect the new battery with the same type (step 3 of the installation procedure) and place it in the position of the old one.
- Follow the step 5 of the installation procedure and power the device.

NOTE: LED= Light Emitting Diode

LABELING EXPLANATION:

X: Self contained

O: Non Maintained (*)

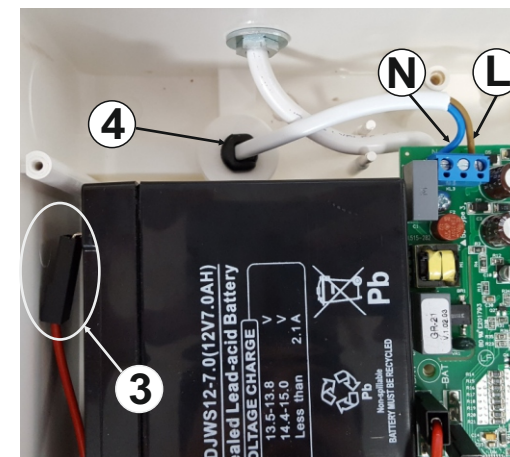
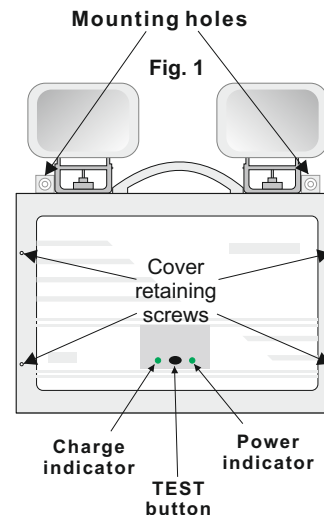
A: Including test device

90: 1.5 hour duration

(*) Non Maintained operation: The luminaire lights its illumination source, only in power supply's failure.

Maintained operation: The luminaire lights its illumination source, when it is powered by the mains power supply or not.

INSTALLATION PROCEDURE (For wall mounting only)



- Install the included mounting accessories to hook the device from the mounting holes (Fig. 1).
- Unfasten the 4 mounting screws to remove the front plastic cover (Fig. 1).
- Make sure that the battery's cables are connected to the respective poles. Black cable to (-) pole and red cable to (+) pole.
- Always use in any case round mains cable, with external diameter of 6-9mm (H05RN-F type 2x1mm² or any other type, at least equal to it's mechanical and electrical properties). ATTENTION!! The cable must not be deformed in any way.** Install the cable grommet and pass the round cable. Connect the wires to the terminal blocks **L** for live wire and **N** for neutral. The luminaire must be connected to a permanent electrical installation to ensure the immobilization of the cable.
- Refit with care the front plastic cover, by fastening the 4 mounting screws (tightening torque 1Nm).

WARNING!! After the installation has finished, charge the batteries for at least 24 hours so as to obtain the rated autonomous duration.

WARRANTY

Olympia Electronics guarantees the quality, condition and operation of the goods. The period of warranty is specified in the official catalogue of Olympia Electronics and also in the technical leaflet, which accompanies each product. This warranty ceases to exist if the buyer does not follow the technical instructions included in official documents given by Olympia Electronics or if the buyer modifies the goods provided or has any repairs or re-setting done by a third party, unless Olympia Electronics has fully agreed to them in writing. Products that have been damaged can be returned to the premises of our company for repair or replacement, as long as the warranty period is valid. Olympia Electronics reserves the right to repair or to replace the returned goods and to or not charge the buyer depending on the reason of defection. Olympia Electronics reserves the right to charge or not the buyer the transportation cost.

HEAD OFFICE

72nd km. O.N.R. Thessaloniki-Katerini
P.C. 60300 P.O. Box 06 Eginio Pierias Greece

www.olympia-electronics.gr

info@olympia-electronics.gr