

BELTR LED



... indoor, plastic, surface-mounted, batten.

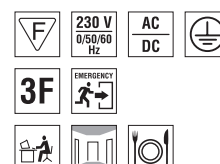
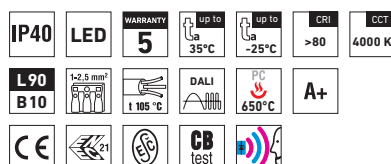
USE

The light fitting is suitable for offices, hallways, school interiors, libraries, lecture rooms, sanitary rooms, hospitals and passenger terminals.

Thanks to its high luminous efficiency and low electricity consumption it is a suitable replacement for light fittings with fluorescent tubes.

ADVANTAGES

- Light fitting protection **IP40**
- Maximum ambient temperature up to **t_a = 35°C**
- Lifetime: 50,000 hours / L90B10
- Diffuser: translucent polycarbonate (PC) = high mechanical resistance
- Body: steel sheet, white colour (RAL 9003)
- Up to 45 % lower electricity consumption when compared to tubes T5
- In DALI version possibility of constant luminous flux for whole lifetime (CLO)
- Standard model - CRI > 80: 4000 K
- At request CRI > 80: 3000 K, 5000 K, 6500 K, CRI > 90: 3000 K, 4000 K
- It can be delivered in dimmable or emergency version
- Possibility to through-wire individual light fittings to row with the use of external terminal blocks
- Certification: ESC, ENEC, CB

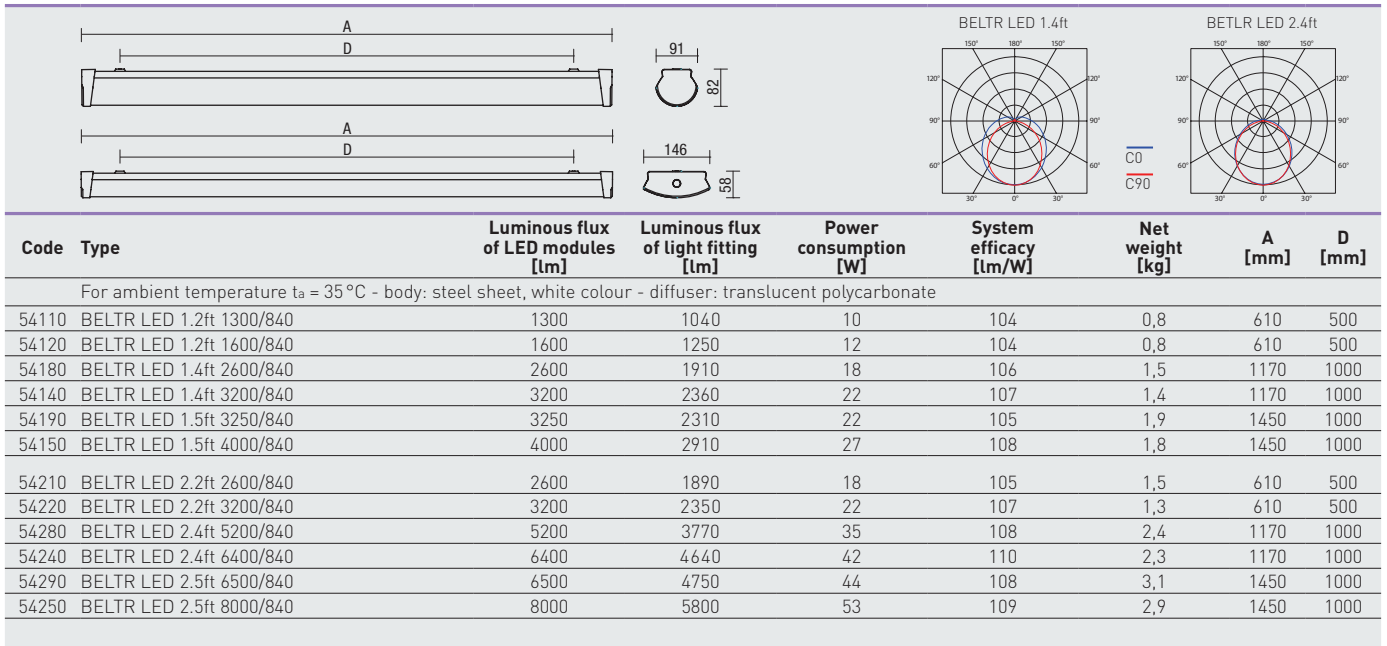


BELTR LED



TECHNICAL DESCRIPTION

- Light fitting protection: IP40
- Maximum ambient temperature: $t_a = 35^\circ\text{C}$, Maximum ambient temperature: $t_a = 25^\circ\text{C}$ (version with emergency back-up source for 1 hour; M1h)
- Maximum system efficacy: 110 lm/W
- The watt and lumen values can vary by $\pm 7,5\%$
- Standard model - CRI > 80: 4000 K
- Lifetime: 50,000 hours / L90B10
- Diffuser: translucent polycarbonate (PC), UV stable, impact-resistant
- Body: steel sheet, white colour (RAL 9003)
- Side covers: white (ABS), UV stable, with offsets allowing fixing the light fitting with enclosed screws M4 against tampering
- Cable gland: white, rubber
- Terminal block: screwless, three-pole (basic version)
- Electric equipment: LED modules, current driver or current driver DALI



54120 BELTR LED 1.2ft 1600/840 = suitable replacement for T8 fl. tube light fitting BELTR 118 - 1 x 18 W
 54140 BELTR LED 1.4ft 3200/840 = suitable replacement for T8 fl. tube light fitting BELTR 136 - 1 x 36 W
 54150 BELTR LED 1.5ft 4000/840 = suitable replacement for T8 fl. tube light fitting BELTR 158 - 1 x 58 W
 54220 BELTR LED 2.2ft 3200/840 = suitable replacement for T8 fl. tube light fitting BELTR 218 - 2 x 18 W
 54240 BELTR LED 2.4ft 6400/840 = suitable replacement for T8 fl. tube light fitting BELTR 236 - 2 x 36 W
 54250 BELTR LED 2.5ft 8000/840 = suitable replacement for T8 fl. tube light fitting BELTR 258 - 2 x 58 W

BELTR LED

Diffuser made of translucent polycarbonate

Code	Type	M1h	DALI	DALI M1h
54110	BELTR LED 1.2ft 1300/840	x	54113	x
54120	BELTR LED 1.2ft 1600/840	x	54123	x
54180	BELTR LED 1.4ft 2600/840	54184	54183	54187
54140	BELTR LED 1.4ft 3200/840	54144	54143	54147
54190	BELTR LED 1.5ft 3250/840	54194	54193	54197
54150	BELTR LED 1.5ft 4000/840	54154	54153	54157
54210	BELTR LED 2.2ft 2600/840	x	54213	x
54220	BELTR LED 2.2ft 3200/840	x	54223	x
54280	BELTR LED 2.4ft 5200/840	54284	54283	54287
54240	BELTR LED 2.4ft 6400/840	54244	54243	54247
54290	BELTR LED 2.5ft 6500/840	54294	54293	54297
54250	BELTR LED 2.5ft 8000/840	54254	54253	54257

Example of type marking: 54243 = BELTR LED 2.4ft 6400/840 DALI M1h

BELTR LED S3F

Diffuser made of translucent polycarbonate, through-wiring with the use of external terminal blocks Wieland (S) GST15i5

Code	Type	M1h	DALI	DALI M1h
54410	BELTR LED 2.2ft S3F 2600/840	x	54413	X
54420	BELTR LED 2.2ft S3F 3200/840	x	54423	x
54480	BELTR LED 2.4ft S3F 5200/840	54484	54483	x
54440	BELTR LED 2.4ft S3F 6400/840	54444	54443	x
54490	BELTR LED 2.5ft S3F 6500/840	54494	54493	x
54450	BELTR LED 2.5ft S3F 8000/840	54454	54453	x

Example of type marking: 54453 = BELTR LED 2.5ft S3F 8000/840 **DALI**

LEGEND

DALI – version with digital dimmable driver DALI

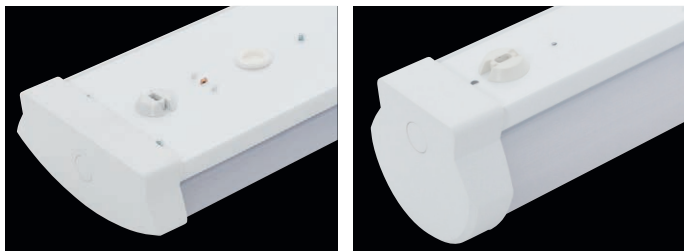
S3F – external terminal block Wieland, 3 phase wiring cables for through-wiring

M1h – emergency back-up source with operating time of 1 hour (SA) for both permanent and emergency illumination

Batteries must be formatted before their putting into operation. Assembly instructions must be observed at installation.

LIGHT FITTING ATTACHMENT

Directly to a ceiling or a wall with the use of screws



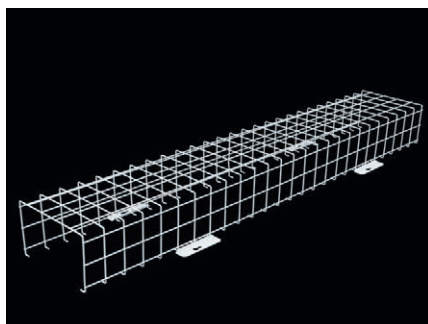
LIGHT FITTING DETAILED VIEW

BELTR LED



OM – protective grid

The metal grid protects the light fitting against mechanical damage and unauthorised handling. It is attached to the surface with the use of screws. The surface is treated with the RAL 9003 powder-coated colour.



Code	Type	Description	Weight [kg]
11941	OM 218	protective grid for types 218, 214/224, 2.2ft (700×220×130 mm)	1,0
11942	OM 236	protective grid for types 236, 228/254, 2.4ft (1300×220×130 mm)	1,7
11943	OM 258	protective grid for types 258, 235/249/280, 2.5ft (1600×220×130 mm)	2,0

Connection cables and connectors



Code	Type	Description	Weight [kg]
27401	GST 15i5-S1	5-pole wiring terminal block	0,1



Code	Type	Description	Weight [kg]
27421	GST 15i5-S21	interconnecting cable 5x1.5 mm ² - female/male L=1m	0,2
27422	GST 15i5-S22	interconnecting cable 5x1.5 mm ² - female/male L=2m	0,3
27423	GST 15i5-S23	interconnecting cable 5x1.5 mm ² - female/male L=3m	0,4
27424	GST 15i5-S24	interconnecting cable 5x1.5 mm ² - female/male L=4m	0,5
27425	GST 15i5-S25	interconnecting cable 5x1.5 mm ² - female/male L=5m	0,6
27426	GST 15i5-S26	interconnecting cable 5x1.5 mm ² - female/male L=6m	0,7
27427	GST 15i5-S27	interconnecting cable 5x1.5 mm ² - female/male L=7m	0,8
27428	GST 15i5-S28	interconnecting cable 5x1.5 mm ² - female/male L=8m	0,9



Code	Type	Description	Weight [kg]
27431	GST 15i5-S31	connecting cable 5x1.5 mm ² - male/free end L=1m	0,2
27432	GST 15i5-S32	connecting cable 5x1.5 mm ² - male/free end L=2m	0,3
27433	GST 15i5-S33	connecting cable 5x1.5 mm ² - male/free end L=3m	0,4
27434	GST 15i5-S34	connecting cable 5x1.5 mm ² - male/free end L=4m	0,5
27435	GST 15i5-S35	connecting cable 5x1.5 mm ² - male/free end L=5m	0,6
27436	GST 15i5-S36	connecting cable 5x1.5 mm ² - male/free end L=6m	0,7
27437	GST 15i5-S37	connecting cable 5x1.5 mm ² - male/free end L=7m	0,8
27438	GST 15i5-S38	connecting cable 5x1.5 mm ² - male/free end L=8m	0,9



Code	Type	Description	Weight [kg]
27441	GST 15i5-S41	connecting cable 5x1.5 mm ² - female/free end L=1m	0,2
27442	GST 15i5-S42	connecting cable 5x1.5 mm ² - female/free end L=2m	0,3
27443	GST 15i5-S43	connecting cable 5x1.5 mm ² - female/free end L=3m	0,4
27444	GST 15i5-S44	connecting cable 5x1.5 mm ² - female/free end L=4m	0,5
27445	GST 15i5-S45	connecting cable 5x1.5 mm ² - female/free end L=5m	0,6
27446	GST 15i5-S46	connecting cable 5x1.5 mm ² - female/free end L=6m	0,7
27447	GST 15i5-S47	connecting cable 5x1.5 mm ² - female/free end L=7m	0,8
27448	GST 15i5-S48	connecting cable 5x1.5 mm ² - female/free end L=8m	0,9