

PRIMA T8



... dustproof, waterproof and impact-resistant.

USE

The light fitting is suitable for industrial indoor and outdoor roofed spaces, sports areas, workshops, garages, transport terminals, warehouses, utility structures and laboratories without a danger of explosion of gas, dust and combustible fumes.

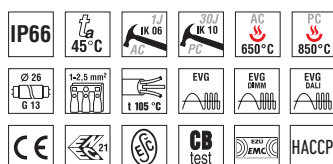
The light fitting is resistant to dust, moisture and spouting water. The body and the diffuser made of polycarbonate (PC) have the increased resistance against deformation and impact.

It is necessary to consider exhalation in the air reducing the usability of the plastic at installations in an aggressive environment, see also page 191.

ADVANTAGES

- Light fitting protection **IP66**
- Maximum ambient temperature **t_a = 45 °C**
- Diffuser: acrylate (AC) = excellent optical characteristics or polycarbonate (PC) = high mechanical resistance
- Clips: polyamide + 15 % glass fibre or stainless steel + polyamide
- Up to 30 % lower electricity consumption in DALI, DIM version
- It can be delivered in dimmable or emergency version
- Through-wiring of up to 10 wires at bodies of 236 and 258 type light fittings
- Certification: ESC, ENEC, CB, HACCP

It is also available in a **LED** design.
More information is in the **TREVOS** catalogue of LED light fittings marked as **PRIMA LED**.

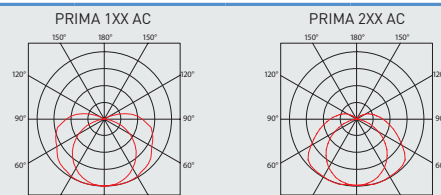
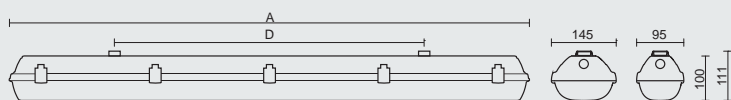


PRIMA T8 AC, ACc



TECHNICAL DESCRIPTION

- Diffuser: transparent acrylate (AC), UV stable, excellent optical characteristics
- Body: grey polycarbonate (PC), UV stable, impact-resistant
- Reflector: steel sheet, white colour (RAL 9003)
- Clips: polyamide + 15 % glass fibre or stainless steel + polyamide
- Sealing: polyurethane (PUR), foamed body groove
- Cable glands: rubber (SBS)
- Terminal block: screwless, three-pole (basic version)
- Distance part: polyamide + 10 % glass fibre, it is used for reflector attachment during assembly
- Installation: package contains stainless hooks and stainless brackets
- Electric equipment: electronic ballast T8; T8 DALI or T8 DIM
- Light fitting protection: IP66
- Maximum ambient temperature: $t_a = 45^\circ\text{C}$



Code	Type	Light sources [W]	Luminous flux [lm]*	Light fitting efficiency [%]	Net weight [kg]	A [mm]	D [mm]
Diffuser made of transparent acrylate (AC) - electronic ballast - T8/G13							
90115	PRIMA 118 AC E	1x18	1350*	82	1.0	662	350
90175	PRIMA 118v AC E	1x18	1350*	82	1.4	662	350
90125	PRIMA 136 AC E	1x36	3350*	82	1.7	1272	700
90135	PRIMA 158 AC E	1x58	5200*	82	2.1	1572	940
90145	PRIMA 218 AC E	2x18	2700*	73	1.4	662	350
90155	PRIMA 236 AC E	2x36	6700*	73	2.3	1272	700
90165	PRIMA 258 AC E	2x58	10400*	73	2.7	1572	940

v - broad version of the light fitting (PRIMA 118v, width 145 mm)

* - total luminous flux of the light fitting with T8/840 sources at the temperature of 25 °C

PRIMA T8 AC E

Code	Type
90115	PRIMA 118 AC E
90175	PRIMA 118v AC E
90125	PRIMA 136 AC E
90135	PRIMA 158 AC E
90145	PRIMA 218 AC E
90155	PRIMA 236 AC E
90165	PRIMA 258 AC E

Diffuser made of transparent acrylate (AC), electronic ballast T8, plastic clips

	1F	3F	M1h	M3h	3F M1h	3F M3h
x	x	x	x	x	x	x
x	x	90174	91174	x	x	x
90126	90106	90124	91124	90104	x	x
90136	90116	90134	91134	90114	93114	x
x	x	90144	91144	x	x	x
90156	90186	90154	91154	90184	93184	x
90166	90196	90164	91164	90194	93194	x

PRIMA T8 ACc E

Code	Type
90215	PRIMA 118 ACc E
90275	PRIMA 118v ACc E
90225	PRIMA 136 ACc E
90235	PRIMA 158 ACc E
90245	PRIMA 218 ACc E
90255	PRIMA 236 ACc E
90265	PRIMA 258 ACc E

Diffuser made of transparent acrylate (AC), electronic ballast T8, stainless clips (c)

	1F	3F	M1h	M3h	3F M1h	3F M3h
x	x	x	x	x	x	x
x	x	90274	91274	x	x	x
90226	90206	90224	91224	90204	x	x
90236	90216	90234	91234	90214	93214	x
x	x	90244	91244	x	x	x
90256	90286	90254	91254	90284	93284	x
90266	90296	90264	91264	90294	93294	x

PRIMA T8 AC ER DIM

Code	Type
91177	PRIMA 118v AC ER DIM
90127	PRIMA 136 AC ER DIM
90137	PRIMA 158 AC ER DIM
90147	PRIMA 218 AC ER DIM
90157	PRIMA 236 AC ER DIM
90167	PRIMA 258 AC ER DIM

Diffuser made of transparent acrylate (AC), electronic analogue dimmable ballast T8 DIM 1-10V, plastic clips

	1F	3F	M1h	M3h	3F M1h	3F M3h
x	x	93174	x	x	x	x
91127	90107	93124	94124	94104	x	x
91137	90117	93134	94134	94114	91114	x
x	x	93144	x	x	x	x
91157	90187	93154	94154	94184	91184	x
91167	90197	93164	94164	94194	91194	x

PRIMA T8 ACc ER DIM

Code	Type
91277	PRIMA 118v ACc ER DIM
90227	PRIMA 136 ACc ER DIM
90237	PRIMA 158 ACc ER DIM
90247	PRIMA 218 ACc ER DIM
90257	PRIMA 236 ACc ER DIM
90267	PRIMA 258 ACc ER DIM

Diffuser made of transparent acrylate (AC), electronic analogue dimmable ballast T8 DIM 1-10V, stainless clips (c)

	1F	3F	M1h	M3h	3F M1h	3F M3h
x	x	93274	x	x	x	x
91227	90207	93224	94224	94204	x	x
91237	90217	93234	94234	94214	91214	x
x	x	93244	x	x	x	x
91257	90287	93254	94254	94284	91284	x
91267	90297	93264	94264	94294	91294	x

Example of type marking: 90294 = PRIMA 258 ACc 3F M1h E

PRIMA T8 AC ER DALI

Code	Type
93177	PRIMA 118v AC ER DALI
93127	PRIMA 136 AC ER DALI
93137	PRIMA 158 AC ER DALI
93147	PRIMA 218 AC ER DALI
93157	PRIMA 236 AC ER DALI
93167	PRIMA 258 AC ER DALI

Diffuser made of transparent acrylate (AC), electronic digital dimmable ballast T8 DALI, plastic clips

1F	3F	M1h	M3h	3F M1h	3F M3h
x	x	93178	x	x	x
94127	93107	93128	94128	94108	x
94137	93117	93138	94138	94118	91118
x	x	93148	x	x	x
94157	93187	93158	94158	94188	91188
94167	93197	93168	94168	94198	91198

PRIMA T8 ACc ER DALI

93277	PRIMA 118v ACc ER DALI
93227	PRIMA 136 ACc ER DALI
93237	PRIMA 158 ACc ER DALI
93247	PRIMA 218 ACc ER DALI
93257	PRIMA 236 ACc ER DALI
93267	PRIMA 258 ACc ER DALI

Diffuser made of transparent acrylate (AC), electronic digital dimmable ballast T8 DALI, stainless clips (c)

x	x	93278	x	x	x
94227	93207	93228	94228	94208	x
94237	93217	93238	94238	94218	91218
x	x	93248	x	x	x
94257	93287	93258	94258	94288	91288
94267	93297	93268	94268	94298	91298

MADE-TO-ORDER VERSION

* we can also deliver made-to-order light fittings equipped with back-up source for emergency (non-maintained) illumination

PRIMA T8 AC NM1h

Diffuser made of transparent acrylate (AC), emergency back-up source - 1 hour for emergency (non-maintained) illumination, plastic clips

PRIMA T8 ACc NM1h

Diffuser made of transparent acrylate (AC), emergency back-up source - 1 hour for emergency (non-maintained) illumination, stainless clips (c)

PRIMA T8 AC NM3h

Diffuser made of transparent acrylate (AC), emergency back-up source - 3 hours for emergency (non-maintained) illumination, plastic clips

PRIMA T8 ACc NM3h

Diffuser made of transparent acrylate (AC), emergency back-up source - 3 hours for emergency (non-maintained) illumination, stainless clips (c)

LEGEND

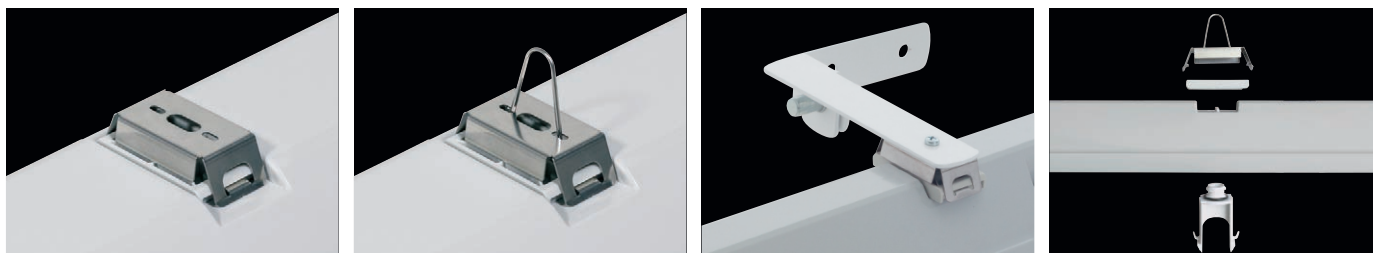
- E** – electronic ballast
- ER DALI** – version with electronic digital dimmable ballast controlled by DALI protocol
- ER DIM** – version with electronic analogue dimmable ballast 1-10 V
- 1F** – 1 phase wiring cables for through-wiring
- 3F** – 3 phase wiring cables for through-wiring

- M1h** – emergency back-up source with operating time of 1 hour (SA) for both permanent and emergency illumination
- M3h** – emergency back-up source with operating time of 3 hours (SA) for both permanent and emergency illumination
- NM1h** – emergency back-up source with operating time of 1 hour (SE) for emergency (non-maintained) illumination
- NM3h** – emergency back-up source with operating time of 3 hours (SE) for emergency (non-maintained) illumination

Batteries must be formatted before their putting into operation. Assembly instructions must be observed at installation.

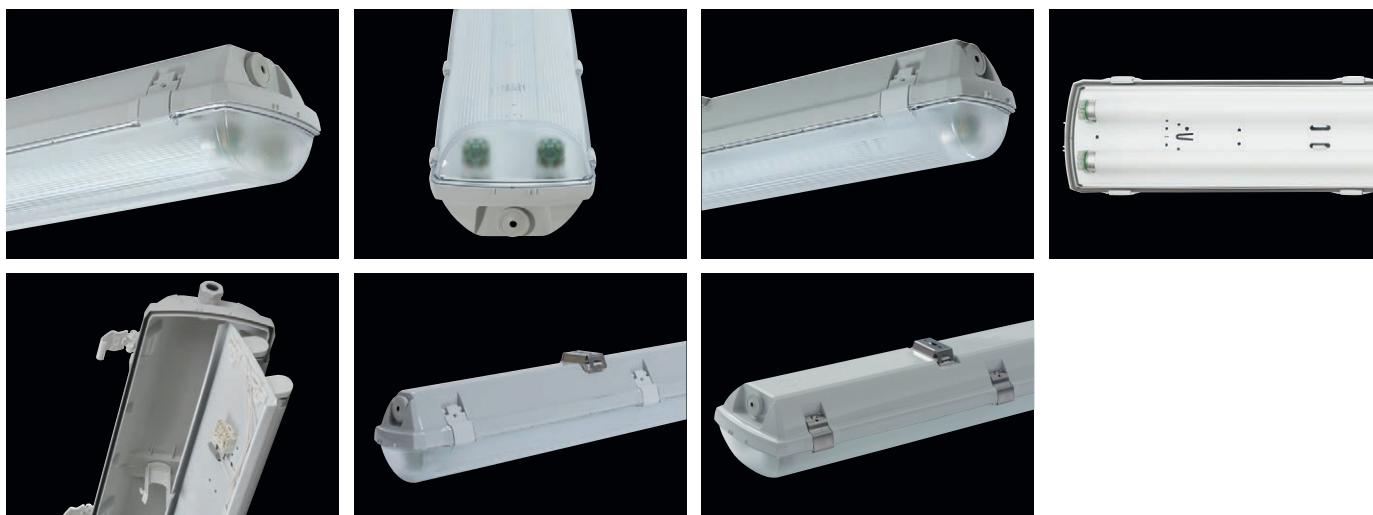
LIGHT FITTING ATTACHMENT

- a) Directly to a ceiling or a wall with the use of screws and stainless brackets
- b) Suspension with the use of stainless hooks
- c) Attachment with the use of side hangers to the wall



LIGHT FITTING DETAILED VIEW

PRIMA T8 AC

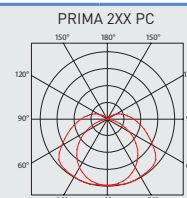
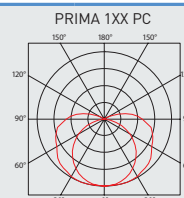
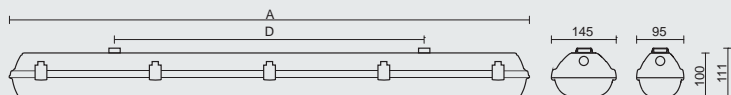


PRIMA T8 PC, PCc



TECHNICAL DESCRIPTION

- Diffuser: transparent polycarbonate (PC), UV stable, impact-resistant
- Body: grey polycarbonate (PC), UV stable, impact-resistant
- Reflector: steel sheet, white colour (RAL 9003)
- Clips: polyamide + 15 % glass fibre or stainless steel + polyamide
- Sealing: polyurethane (PUR), foamed body groove
- Terminal block: screwless, three-pole (basic version)
- Cable glands: rubber (SBS)
- Distance part: polyamide + 10 % glass fibre, it is used for reflector attachment during assembly
- Installation: package contains stainless hooks and stainless brackets
- Electric equipment: electronic ballast T8; T8 DALI or T8 DIM
- Light fitting protection: IP66
- Maximum ambient temperature: $t_a = 45^\circ\text{C}$



Code	Type	Light sources [W]	Luminous flux [lm]*	Light fitting efficiency [%]	Net weight [kg]	A [mm]	D [mm]
Diffuser made of transparent polycarbonate (PC) - electronic ballast - T8/G13							
90315	PRIMA 118 PC E	1x18	1350*	82	1.0	662	350
90375	PRIMA 118v PC E	1x18	1350*	82	1.4	662	350
90325	PRIMA 136 PC E	1x36	3350*	82	1.7	1272	700
90335	PRIMA 158 PC E	1x58	5200*	82	2.1	1572	940
90345	PRIMA 218 PC E	2x18	2700*	73	1.4	662	350
90355	PRIMA 236 PC E	2x36	6700*	73	2.3	1272	700
90365	PRIMA 258 PC E	2x58	10400*	73	2.7	1572	940

v - broad version of the light fitting (PRIMA 118v, width 145 mm)

* - total luminous flux of the light fitting with T8/840 sources at the temperature of 25 °C

PRIMA T8 PC E

Code	Type
90315	PRIMA 118 PC E
90375	PRIMA 118v PC E
90325	PRIMA 136 PC E
90335	PRIMA 158 PC E
90345	PRIMA 218 PC E
90355	PRIMA 236 PC E
90365	PRIMA 258 PC E

Diffuser made of transparent polycarbonate (PC), electronic ballast T8, plastic clips

	1F	3F	M1h	M3h	3F M1h	3F M3h
	x	x	x	x	x	x
	x	x	90374	91374	x	x
	90326	90306	90324	91324	90304	x
	90336	90316	90334	91334	90314	93314
	x	x	90344	91344	x	x
	90356	90386	90354	91354	90384	93384
	90366	90396	90364	91364	90394	93394

PRIMA T8 PCc E

Code	Type
90415	PRIMA 118 PCc E
90475	PRIMA 118v PCc E
90425	PRIMA 136 PCc E
90435	PRIMA 158 PCc E
90445	PRIMA 218 PCc E
90455	PRIMA 236 PCc E
90465	PRIMA 258 PCc E

Diffuser made of transparent polycarbonate (PC), electronic ballast T8, stainless clips (c)

	1F	3F	M1h	M3h	3F M1h	3F M3h
	x	x	x	x	x	x
	x	x	90474	91474	x	x
	90426	90406	90424	91424	90404	x
	90436	90416	90434	91434	90414	93414
	x	x	90444	91444	x	x
	90456	90486	90454	91454	90484	93484
	90466	90496	90464	91464	90494	93494

PRIMA T8 PC ER DIM

Code	Type
91377	PRIMA 118v PC ER DIM
90327	PRIMA 136 PC ER DIM
90337	PRIMA 158 PC ER DIM
90347	PRIMA 218 PC ER DIM
90357	PRIMA 236 PC ER DIM
90367	PRIMA 258 PC ER DIM

Diffuser made of transparent polycarbonate (PC), electronic analogue dimmable ballast T8 DIM 1-10 V, plastic clips

	1F	3F	M1h	M3h	3F M1h	3F M3h
	x	x	93374	x	x	x
	91327	90307	93324	94324	94304	x
	91337	90317	93334	94334	94314	91314
	x	x	93344	x	x	x
	91357	90387	93354	94354	94384	91384
	91367	90397	93364	94364	94394	91394

PRIMA T8 PCc ER DIM

Code	Type
91477	PRIMA 118v PCc ER DIM
90427	PRIMA 136 PCc ER DIM
90437	PRIMA 158 PCc ER DIM
90447	PRIMA 218 PCc ER DIM
90457	PRIMA 236 PCc ER DIM
90467	PRIMA 258 PCc ER DIM

Diffuser made of transparent polycarbonate (PC), electronic analogue dimmable ballast T8 DIM 1-10 V, stainless clips (c)

	1F	3F	M1h	M3h	3F M1h	3F M3h
	x	x	93474	x	x	x
	91427	90407	93424	94424	94404	x
	91437	90417	93434	94434	94414	91414
	x	x	93444	x	x	x
	91457	90487	93454	94454	94484	91484
	91467	90497	93464	94464	94494	91494

Example of type marking: 90494 = PRIMA 258 PCc 3F M1h E

PRIMA T8 PC ER DALI

Code	Type
93377	PRIMA 118v PC ER DALI
93327	PRIMA 136 PC ER DALI
93337	PRIMA 158 PC ER DALI
93347	PRIMA 218 PC ER DALI
93357	PRIMA 236 PC ER DALI
93367	PRIMA 258 PC ER DALI

Diffuser made of transparent polycarbonate (PC), electronic digital dimmable ballast T8 DALI, plastic clips

1F	3F	M1h	M3h	3F M1h	3F M3h
x	x	93378	x	x	x
94327	93307	93328	94328	94308	x
94337	93317	93338	94338	94318	91318
x	x	93348	x	x	x
94357	93387	93358	94358	94388	91388
94367	93397	93368	94368	94398	91398

PRIMA T8 PCc ER DALI

Code	Type
93477	PRIMA 118v PCc ER DALI
93427	PRIMA 136 PCc ER DALI
93437	PRIMA 158 PCc ER DALI
93447	PRIMA 218 PCc ER DALI
93457	PRIMA 236 PCc ER DALI
93467	PRIMA 258 PCc ER DALI

Diffuser made of transparent polycarbonate (PC), electronic digital dimmable ballast T8 DALI, stainless clips (c)

Code	Type	M1h	M3h	3F M1h	3F M3h
x	x	93478	x	x	x
94427	93407	93428	94428	94408	x
94437	93417	93438	94438	94418	91418
x	x	93448	x	x	x
94457	93487	93458	94458	94488	91488
94467	93497	93468	94468	94498	91498

MADE-TO-ORDER VERSION

* we can also deliver made-to-order light fittings equipped with back-up source for emergency (non-maintained) illumination

PRIMA T8 PC NM1h

Diffuser made of transparent polycarbonate (PC), emergency back-up source - 1 hour for emergency (non-maintained) illumination, plastic clips

PRIMA T8 PCc NM1h

Diffuser made of transparent polycarbonate (PC), emergency back-up source - 1 hour for emergency (non-maintained) illumination, stainless clips (c)

PRIMA T8 PC NM3h

Diffuser made of transparent polycarbonate (PC), emergency back-up source - 3 hours for emergency (non-maintained) illumination, plastic clips

PRIMA T8 PCc NM3h

Diffuser made of transparent polycarbonate (PC), emergency back-up source - 3 hours for emergency (non-maintained) illumination, stainless clips (c)

LEGEND

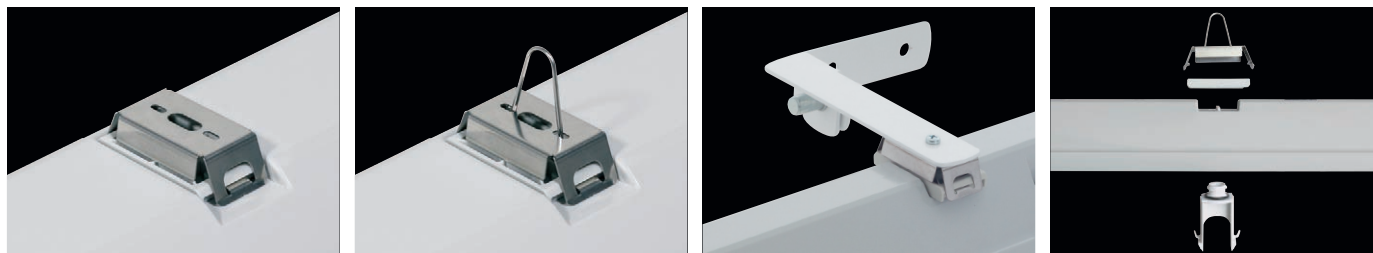
- E** – electronic ballast
- ER DALI** – version with electronic digital dimmable ballast controlled by DALI protocol
- ER DIM** – version with electronic analogue dimmable ballast 1-10 V
- 1F** – 1 phase wiring cables for through-wiring
- 3F** – 3 phase wiring cables for through-wiring

- M1h** – emergency back-up source with operating time of 1 hour (SA) for both permanent and emergency illumination
- M3h** – emergency back-up source with operating time of 3 hours (SA) for both permanent and emergency illumination
- NM1h** – emergency back-up source with operating time of 1 hour (SE) for emergency (non-maintained) illumination
- NM3h** – emergency back-up source with operating time of 3 hours (SE) for emergency (non-maintained) illumination

Batteries must be formatted before their putting into operation. Assembly instructions must be observed at installation.

LIGHT FITTING ATTACHMENT

- a) Directly to a ceiling or a wall with the use of screws and stainless brackets
- b) Suspension with the use of stainless hooks
- c) Attachment with the use of side hangers to the wall



LIGHT FITTING DETAILED VIEW

PRIMA T8 PC

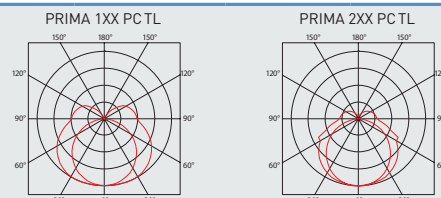
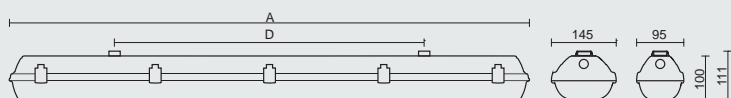


PRIMA T8 PC TL, PCc TL



TECHNICAL DESCRIPTION

- Diffuser: translucent polycarbonate (PC TL), UV stable, impact-resistant
- Body: grey polycarbonate (PC), UV stable, impact-resistant
- Reflector: steel sheet, white colour (RAL 9003)
- Clips: polyamide + 15 % glass fibre or stainless steel + polyamide
- Sealing: polyurethane (PUR), foamed body groove
- Cable glands: rubber (SBS)
- Terminal block: screwless, three-pole (basic version)
- Distance part: polyamide + 10 % glass fibre, it is used for reflector attachment during assembly
- Installation: package contains stainless hooks and stainless brackets
- Electric equipment: electronic ballast T8; T8 DALI or T8 DIM
- Light fitting protection: IP66
- Maximum ambient temperature: $t_a = 45^\circ\text{C}$



Code	Type	Light sources [W]	Luminous flux [lm]*	Light fitting efficiency [%]	Net weight [kg]	A [mm]	D [mm]
Diffuser made of translucent polycarbonate (PC TL) - electronic ballast - T8/G13							
34315	PRIMA 118 PC TL E	1x18	1350*	82	1.0	662	350
34325	PRIMA 136 PC TL E	1x36	3350*	82	1.7	1272	700
34335	PRIMA 158 PC TL E	1x58	5200*	82	2.1	1572	940
34345	PRIMA 218 PC TL E	2x18	2700*	73	1.4	662	350
34355	PRIMA 236 PC TL E	2x36	6700*	73	2.3	1272	700
34365	PRIMA 258 PC TL E	2x58	10400*	73	2.7	1572	940

* - total luminous flux of the light fitting with T8/840 sources at the temperature of 25 °C

PRIMA T8 PC TL E

Diffuser made of translucent polycarbonate (PC TL), electronic ballast T8, plastic clips

Code	Type	1F	3F	M1h	M3h	3F M1h	3F M3h
34315	PRIMA 118 PC TL E	x	x	x	x	x	x
34325	PRIMA 136 PC TL E	34326	34306	37327	37328	37307	x
34335	PRIMA 158 PC TL E	34336	34316	37337	37338	37317	37318
34345	PRIMA 218 PC TL E	x	x	37347	37348	x	x
34355	PRIMA 236 PC TL E	34356	34386	37357	37358	37387	37388
34365	PRIMA 258 PC TL E	34366	34396	37367	37368	37397	37398

PRIMA T8 PCc TL E

Diffuser made of translucent polycarbonate (PC TL), electronic ballast T8, stainless clips (c)

Code	Type	1F	3F	M1h	M3h	3F M1h	3F M3h
34415	PRIMA 118 PCc TL E	x	x	x	x	x	x
34425	PRIMA 136 PCc TL E	34426	34406	37427	37428	37407	x
34435	PRIMA 158 PCc TL E	34436	34416	37437	37438	37417	37418
34445	PRIMA 218 PCc TL E	x	x	37447	37448	x	x
34455	PRIMA 236 PCc TL E	34456	34486	37457	37458	37487	37488
34465	PRIMA 258 PCc TL E	34466	34496	37467	37468	37497	37498

PRIMA T8 PCTL ER DIM

Diffuser made of translucent polycarbonate (PC TL), electronic analogue dimmable ballast T8 DIM 1-10 V, plastic clips

Code	Type	1F	3F	M1h	M3h	3F M1h	3F M3h
37324	PRIMA 136 PCTL ER DIM	37304	37305	38324	38325	38304	x
37334	PRIMA 158 PCTL ER DIM	37314	37315	38334	38335	38314	38315
37344	PRIMA 218 PCTL ER DIM	x	x	38344	x	x	x
37354	PRIMA 236 PCTL ER DIM	37384	37385	38354	38355	38384	38385
37364	PRIMA 258 PCTL ER DIM	37394	37395	38364	38365	38394	38395

PRIMA T8 PCc TL ER DIM

Diffuser made of translucent polycarbonate (PC TL), electronic analogue dimmable ballast T8 DIM 1-10 V, stainless clips (c)

Code	Type	1F	3F	M1h	M3h	3F M1h	3F M3h
37424	PRIMA 136 PCc TL ER DIM	37404	37405	38424	38425	38404	x
37434	PRIMA 158 PCc TL ER DIM	37414	37415	38434	38435	38414	38415
37444	PRIMA 218 PCc TL ER DIM	x	x	38444	x	x	x
37454	PRIMA 236 PCc TL ER DIM	37484	37485	38454	38455	38484	38485
37464	PRIMA 258 PCc TL ER DIM	37494	37495	38464	38465	38494	38495

Example of type marking: 38494 = PRIMA 258 PCc TL **3F M1h** ER DIM

PRIMA T8 PCTL ER DALI

Diffuser made of translucent polycarbonate (PC TL),
electronic digital dimmable ballast T8 DALI, plastic clips

Code	Type	1F	3F	M1h	M3h	3F M1h	3F M3h
37325	PRIMA 136 PCTL ER DALI	37326	37306	38326	38327	38306	x
37335	PRIMA 158 PCTL ER DALI	37336	37316	38336	38337	38316	38317
37345	PRIMA 218 PCTL ER DALI	x	x	38346	x	x	x
37355	PRIMA 236 PCTL ER DALI	37356	37386	38356	38357	38386	38387
37365	PRIMA 258 PCTL ER DALI	37366	37396	38366	38367	38396	38397

PRIMA T8 PCc TL ER DALI

Diffuser made of translucent polycarbonate (PCTL),
electronic digital dimmable ballast T8 DALI, stainless clips (c)

Code	Type	1F	3F	M1h	M3h	3F M1h	3F M3h
37425	PRIMA 136 PCc TL ER DALI	37426	37406	38426	38427	38406	x
37435	PRIMA 158 PCc TL ER DALI	37436	37416	38436	38437	38416	38417
37445	PRIMA 218 PCc TL ER DALI	x	x	38446	x	x	x
37455	PRIMA 236 PCc TL ER DALI	37456	37486	38456	38457	38486	38487
37465	PRIMA 258 PCc TL ER DALI	37466	37496	38466	38467	38496	38497

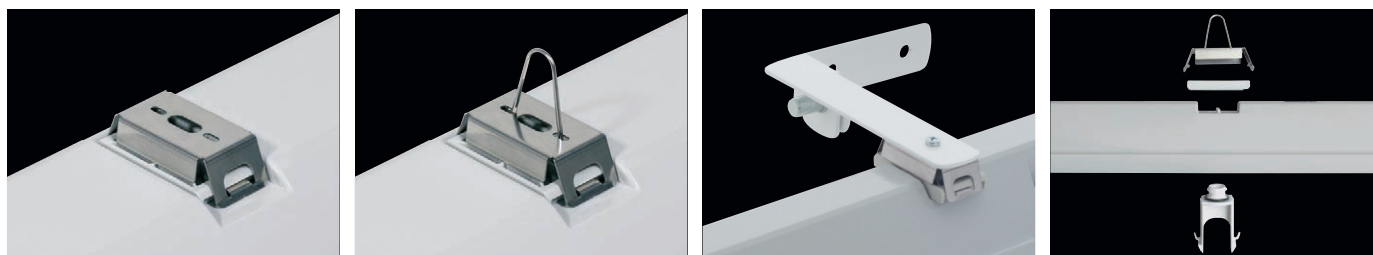
Example of type marking: 38496 = PRIMA 258 PCc TL **3F M1h** ER DALI

LEGEND

- E** – electronic ballast
 - ER DALI** – version with electronic digital dimmable ballast controlled by DALI protocol
 - ER DIM** – version with electronic analogue dimmable ballast 1-10 V
 - 1F** – 1 phase wiring cables for through-wiring
 - 3F** – 3 phase wiring cables for through-wiring
 - M1h** – emergency back-up source with operating time of 1 hour (SA) for both permanent and emergency illumination
 - M3h** – emergency back-up source with operating time of 3 hours (SA) for both permanent and emergency illumination
- Batteries must be formatted before their putting into operation. Assembly instructions must be observed at installation.

LIGHT FITTING ATTACHMENT

- a) Directly to a ceiling or a wall with the use of screws and stainless brackets
- b) Suspension with the use of stainless hooks
- c) Attachment with the use of side hangers to the wall



LIGHT FITTING DETAILED VIEW

PRIMA T8 PC TL

