



MV7H 330-11Y-M20-1366

- temperature resistant version (up to 160°C)
- Metal enclosure
- Long life
- 40 mm x 76 mm x 40 mm (basic component)
- Suitable for low actuating speeds
- 1 Cable entry M 20 x 1.5
- free of silicon
- proved in power station applications
- Actuator head can be repositioned in steps 4 x 90°
- Continuous adjustment of lever position 360°
- Lever can be transposed by 180°

Data

Ordering data

Product type description	MV7H 330-11Y-M20-1366
Article number (order number)	101160085
EAN (European Article Number)	4030661188744
eCl@ss number, Version 9.0	27-27-06-01
eCl@ss number, Version 11.0	27-27-06-01
eCl@ss number, Version 12.0	27-27-06-01
ETIM number, version 7.0	EC000030
ETIM number, version 6.0	EC000030

Approval - Standards

Certificates	CCC
	EAC

General data

Standards	EN 60947-5-1
Active principle	mechanical
Slide form	Castor
Enclosure material	Light-alloy diecast, paint finish
Enclosure coating material	painted
Material of the contacts, electrical	Silver
Roller material	Metal film
Gross weight	425 g

General data - Features

Number of openers	1
Number of shutters	1

Safety appraisal - Safety outputs

B _{10D} Normally-closed contact (NC)	20,000,000 Operations
---	-----------------------

Mechanical data

Actuating element	Roller lever
Contact opening	2 x 0.5 mm
Actuating speed, minimum	1 mm/min
Actuating torque	0.5 Nm
Repeat accuracy of switching points	0.02

Mechanical data - Connection technique

Terminal Connector	Screw terminals M20 x 1.5
Cable section, maximum	2.5 mm ²
Note (Cable section)	All indications including the conductor ferrules.

Wire cross-section	13 AWG
--------------------	--------

Mechanical data - Dimensions

Length of sensor	40 mm
Width of sensor	40 mm
Height of sensor	232 mm
Width of Castor	9 mm
Diameter of Castor	37 mm

Ambient conditions

Degree of protection	IP65
Ambient temperature, minimum	-30 °C
Ambient temperature, maximum	+160 °C
Restistance to shock	50 g / 6 ms

Ambient conditions - Insulation value

Rated insulation voltage U_i	500 V
Rated impulse withstand voltage U_{imp}	4 kV

Electrical data

Thermal test current	6 A
Utilisation category AC-15	230 VAC
Utilisation category AC-15	2.5 A
Switching element	NO contact, NC contact
Note (Switching element)	galvanically separated contact bridges
Switching principle	Snap switch element
Bounce duration, maximum	43,221 ms
Switchover time, maximum	10 ms

Pictures

Product picture (catalogue individual photo)

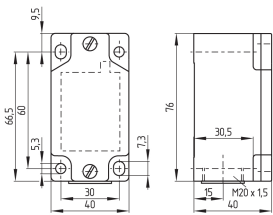


ID: km330f03

| 389.5 kB | .jpg | 127.353 x 432.153 mm - 361 x 1225 px - 72 dpi

| 159.1 kB | .png | 74.083 x 251.178 mm - 210 x 712 px - 72 dpi

Dimensional drawing basic component



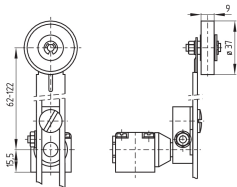
ID: 1m330g01

| 24.6 kB | .cdr |

| 4.0 kB | .png | 74.083 x 51.858 mm - 210 x 147 px - 72 dpi

| 107.3 kB | .jpg | 352.778 x 247.297 mm - 1000 x 701 px - 72 dpi

Dimensional drawing actuator



ID: 1m330b03

| 9.8 kB | .png | 74.083 x 51.858 mm - 210 x 147 px - 72 dpi

| 98.8 kB | .jpg | 352.778 x 247.297 mm - 1000 x 701 px - 72 dpi

Operating principle



ID: 235hz02

| 16.8 kB | .cdr |

| 212.6 kB | .jpg | 352.778 x 870.656 mm - 1000 x 2468 px - 72 dpi

| 3.8 kB | .png | 74.083 x 182.739 mm - 210 x 518 px - 72 dpi

The details and data referred to have been carefully checked. Images may diverge from original. Further technical data can be found in the manual. Technical amendments and errors possible.

Generated on: 3/17/2022, 9:52 AM