



LED module for display of the contactor function, 24 ... 240 V AC / DC, protected against polarity reversal, for motor contactors size S00 to S12, multi-unit packaging = 5 units

General technical data		
product brand name		SIRIUS
product designation		LED display module
Certificates/ approvals		
General Product Approval	EMC	Declaration of Conformity



[Confirmation](#)

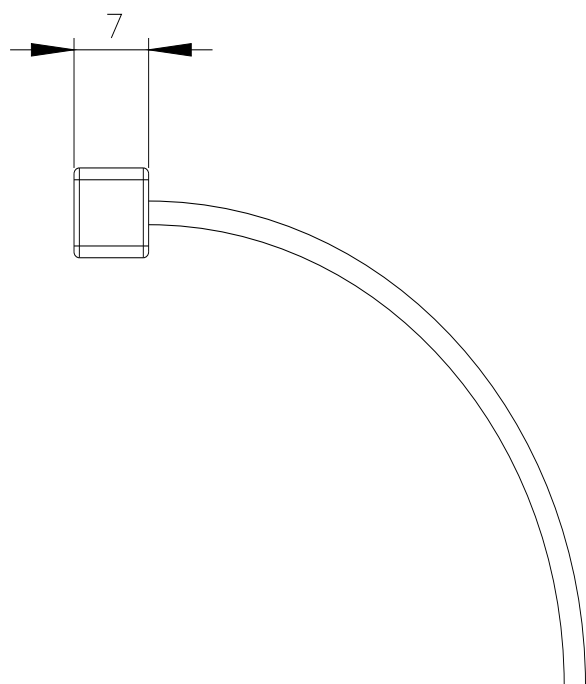
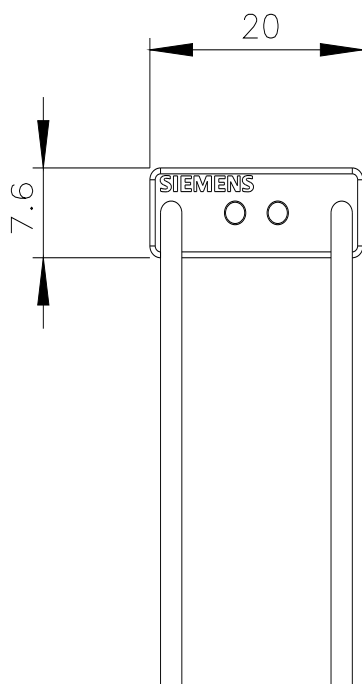


EG-Konf.

Declaration of Conformity	Test Certificates	Marine / Shipping
<a href="#">UK Declaration of Conformity</a>	<a href="#">Type Test Certificates/Test Report</a>	<a href="#">Special Test Certificate</a>

Marine / Shipping	other	Railway
	<a href="#">Confirmation</a>	<a href="#">Vibration and Shock</a>

Further information
<p>Information- and Downloadcenter (Catalogs, Brochures,...)</p> <p><a href="https://www.siemens.com/ic10">https://www.siemens.com/ic10</a></p> <p>Industry Mall (Online ordering system)</p> <p><a href="https://mall.industry.siemens.com/mall/en/en/Catalog/product?mlfb=3RT2926-1QT00">https://mall.industry.siemens.com/mall/en/en/Catalog/product?mlfb=3RT2926-1QT00</a></p> <p>Cax online generator</p> <p><a href="http://support.automation.siemens.com/WW/CAXorder/default.aspx?lang=en&amp;mlfb=3RT2926-1QT00">http://support.automation.siemens.com/WW/CAXorder/default.aspx?lang=en&amp;mlfb=3RT2926-1QT00</a></p> <p>Service&amp;Support (Manuals, Certificates, Characteristics, FAQs,...)</p> <p><a href="https://support.industry.siemens.com/cs/ww/en/ps/3RT2926-1QT00">https://support.industry.siemens.com/cs/ww/en/ps/3RT2926-1QT00</a></p> <p>Image database (product images, 2D dimension drawings, 3D models, device circuit diagrams, EPLAN macros, ...)</p> <p><a href="http://www.automation.siemens.com/bilddb/cax_de.aspx?mlfb=3RT2926-1QT00&amp;lang=en">http://www.automation.siemens.com/bilddb/cax_de.aspx?mlfb=3RT2926-1QT00&amp;lang=en</a></p>



last modified:

12/23/2020 