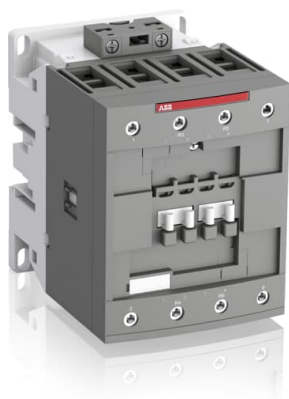


PRODUCT-DETAILS

# AF80-22-00-11

## AF80-22-00-11 24-60V50/60HZ 20-60VDC

### Contactors



#### Γενικές Πληροφορίες

Extended Product Type	AF80-22-00-11
Product ID	1SBL397501R1100
EAN	3471523133914
Catalog Description	AF80-22-00-11 24-60V50/60HZ 20-60VDC Contactor
Long Description	<p>The AF80-22-00-11 is a 4 pole - 1000 V IEC or 600 UL contactor with screw terminals, controlling motors up to 37 kW / 400 V AC (AC-3) and switching power circuits up to 125 A (AC-1) or 105 A UL general use. Thanks to the AF technology, the contactor has a wide control voltage range (24-60 V 50/60 Hz and 20-60 V DC), managing large control voltage variations, reducing panel energy consumptions and ensuring distinct operations in unstable networks. Furthermore, surge protection is built-in, offering a compact solution. AF contactors have a block type design, can be easily extended with add-on auxiliary contact blocks and an additional wide range of accessories.</p>

#### Ordering

Minimum Order Quantity	1 piece
Customs Tariff Number	85364900

#### Popular Downloads

Instructions and Manuals	1SBC101047M6801
--------------------------	-----------------

#### Dimensions

Product Net Width	90 mm
Product Net Depth / Length	116 mm
Product Net Height	125.5 mm
Product Net Weight	1.49 kg

## Technical

Number of Main Contacts NO	2
Number of Main Contacts NC	2
Number of Auxiliary Contacts NO	0
Number of Auxiliary Contacts NC	0
Rated Operational Voltage	Main Circuit 1000 V
Rated Frequency (f)	Main Circuit 50 / 60 Hz
Conventional Free-air Thermal Current ( $I_{th}$ )	acc. to IEC 60947-4-1, Open Contactors $q = 40\text{ °C}$ 125 A
Rated Operational Current AC-1 ( $I_e$ )	(690 V) 40 °C 125 A (690 V) 60 °C 105 A (690 V) 70 °C 90 A
Rated Operational Current AC-3 ( $I_e$ )	(415 V) 60 °C 80 A (440 V) 60 °C 80 A (500 V) 60 °C 65 A (690 V) 60 °C 49 A (1000 V) 60 °C 25 A (380 / 400 V) 60 °C 80 A (220 / 230 / 240 V) 60 °C 80 A
Rated Operational Power AC-3 ( $P_e$ )	(415 V) 45 kW (440 V) 45 kW (500 V) 45 kW (690 V) 45 kW (1000 V) 35 kW (380 / 400 V) 37 kW (220 / 230 / 240 V) 22 kW
Rated Short-time Withstand Current Low Voltage ( $I_{cw}$ )	at 40 °C Ambient Temp, in Free Air, from a Cold State 10 s 780 A at 40 °C Ambient Temp, in Free Air, from a Cold State 15 min 140 A at 40 °C Ambient Temp, in Free Air, from a Cold State 1 min 300 A at 40 °C Ambient Temp, in Free Air, from a Cold State 1 s 1200 A at 40 °C Ambient Temp, in Free Air, from a Cold State 30 s 450 A for 1 s -empty- A
Maximum Breaking Capacity	$\cos \phi = 0.45$ ( $\cos \phi = 0.35$ for $I_e > 100$ A) at 440 V 1150 A $\cos \phi = 0.45$ ( $\cos \phi = 0.35$ for $I_e > 100$ A) at 690 V 750 A
Maximum Electrical Switching Frequency	(AC-1) 600 cycles per hour
Rated Insulation Voltage ( $U_i$ )	acc. to IEC 60947-4-1 and VDE 0110 (Gr. C) 1000 V acc. to UL/CSA 600 V
Rated Impulse Withstand Voltage ( $U_{imp}$ )	8 kV
Maximum Mechanical Switching Frequency	3600 cycles per hour
Rated Control Circuit Voltage ( $U_c$ )	50 Hz 24 ... 60 V 60 Hz 24 ... 60 V DC Operation 20 ... 60 V
Mounting on DIN Rail	TH35-15 (35 x 15 mm Mounting Rail) acc. to IEC 60715
Mounting by Screws (not supplied)	2 x M4 or 2 x M6 screws placed diagonally
Connecting Capacity Main Circuit	Flexible with Ferrule 1/2x 6 ... 50 mm <sup>2</sup> Rigid 1x 6 ... 70 mm <sup>2</sup> Rigid 2x 6 ... 50 mm <sup>2</sup>
Connecting Capacity Control Circuit	Flexible with Ferrule 1/2x 0.75 ... 2.5 mm <sup>2</sup> Rigid 1/2x 1 ... 2.5 mm <sup>2</sup>
Wire Stripping Length	Main Circuit 17 mm
Degree of Protection	acc. to IEC 60529, IEC 60947-1, EN 60529 Coil Terminals IP20

acc. to IEC 60529, IEC 60947-1, EN 60529 Main Terminals IP10

Terminal Type Screw Terminals

**Technical UL/CSA**

General Use Rating UL/CSA	(600 V AC) 105 A
Horsepower Rating UL/CSA	(120 V AC) Single Phase 7-1/2 hp (200 ... 208 V AC) Three Phase 25 hp (220 ... 240 V AC) Three Phase 30 hp (240 V AC) Single Phase 15 hp (440 ... 480 V AC) Three Phase 60 hp (550 ... 600 V AC) Three Phase 75 hp

**Environmental**

Ambient Air Temperature	Close to Contactor for Storage -60 ... +80 °C Near Contactor for Operation in Free Air -40 ... 70 °C
Climatic Withstand	Category B according to IEC 60947-1 Annex Q
Maximum Operating Altitude Permissible	Without Derating 3000 m
Resistance to Vibrations acc. to IEC 60068-2-6	5 ... 300 Hz 3 g Closed position / 2 g Open position
RoHS Status	Following EU Directive 2011/65/EU

**Certificates and Declarations (Document Number)**

ABS Certificate	ABS_20-2060694-PDA
BV Certificate	BV_2634H36994A
CB Certificate	CB_SE-96557M2
CCC Certificate	CCC_2013010304646569
CQC Certificate	CQC2013010304646569
Declaration of Conformity - CCC	2020980304001255
Declaration of Conformity - CE	1SBD250001U1000
DNV Certificate	DNV-GL_TAE00001AF-3
DNV GL Certificate	DNV-GL_TAE00001AF-3
EAC Certificate	EAC_RU_FRME77B03447
GL Certificate	DNV-GL_TAE00001AF-3
Instructions and Manuals	1SBC101047M6801
KC Certificate	KC_HW02016-15013C
RoHS Information	1SBD250001U1000
UL Certificate	UL_20141124-E312527-14-2
UL Listing Card	UL_E312527

**Container Information**

Package Level 1 Units	box 1 piece
Package Level 1 Width	150 mm
Package Level 1 Depth / Length	150 mm
Package Level 1 Height	103 mm
Package Level 1 Gross Weight	1.62 kg
Package Level 1 EAN	3471523133914
Package Level 2 Units	box 8 piece

Package Level 2 Width	250 mm
Package Level 2 Depth / Length	300 mm
Package Level 2 Height	300 mm
Package Level 2 Gross Weight	12.96 kg
Package Level 3 Units	192 piece

## Classifications

Object Classification Code	Q
ETIM 4	EC000066 - Magnet contactor, AC-switching
ETIM 5	EC000066 - Magnet contactor, AC-switching
ETIM 6	EC000066 - Power contactor, AC switching
ETIM 7	EC000066 - Power contactor, AC switching
eClass	V11.0 : 27371003
UNSPSC	39121529
E-Number (Finland)	3707448
E-Number (Sweden)	3210350

## Κατηγορίες

Προϊόντα και Συστήματα Χαμηλής Τάσης → Προϊόντα Ελέγχου → Τηλεχειριζόμενοι Διακόπτες Αέρος → Τηλεχειριζόμενοι Διακόπτες Κλειστού Τύπου

