

Thermostat DTW

Areas of use

Thermostat DTW is used to regulate valves for heating and cooling ex. radiators, cooling system and towelwarmers.

Description

DTW is a self-acting adjustable thermostatic head deisigned to achieve best possible temperature regulation function.

The symbol * is a frost protection used in rooms that will have a low temperature.

DTW has a connection that is M30x1,5 and will be delivered with an adapter for MMAs valves.

The thermostat is also made in chrome.

Approved under EN215 in combination with FVR10, FVR15 and FVV15.

Technical data

Setting range

9-29°C

Hysteresis

1K max

Water temperature influence

1,5K

Differential pressure influence

1K

Response time

33 minutes

Mark

EN215

Material

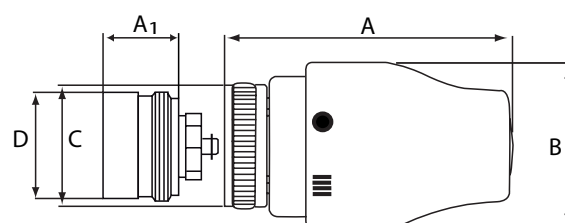
Polyamid, brass

Weight

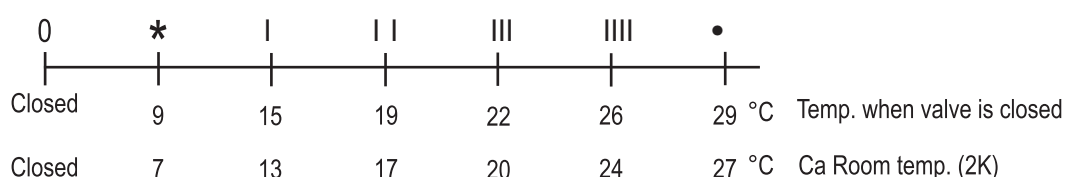
86 g

Measurements

	A	A ₁	B	C	D
DTW	78	15	43,5	M30x1,5	M28x1,5



Temperature scale



NB! the room temperature will be about 1-2°C lower than set value.